

# LES RISQUES NATURELS

EN MEDITERRANEE

Jean Mascle, Dr CNRS

## Définitions

→ Risque = Aléa \* Vulnérabilité

**Aléa =**

Probabilité d'un phénomène

**Vulnérabilité =**

Impact sur la société

## Classifications

→ Nature

→ Météorologiques et climatiques

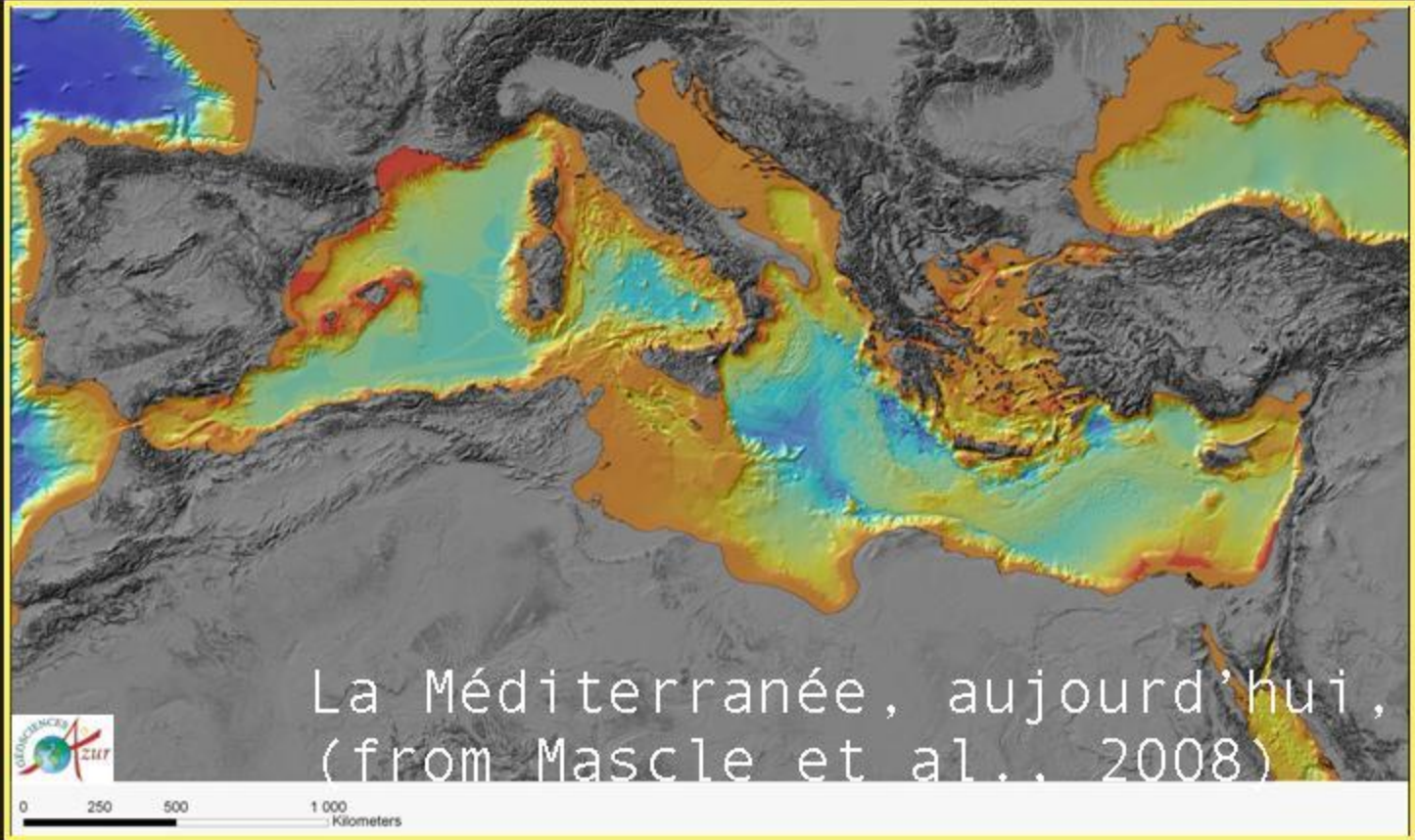
→ Géophysiques

→ Biologiques, mixtes, ....

## Classifications

→ Récurrence

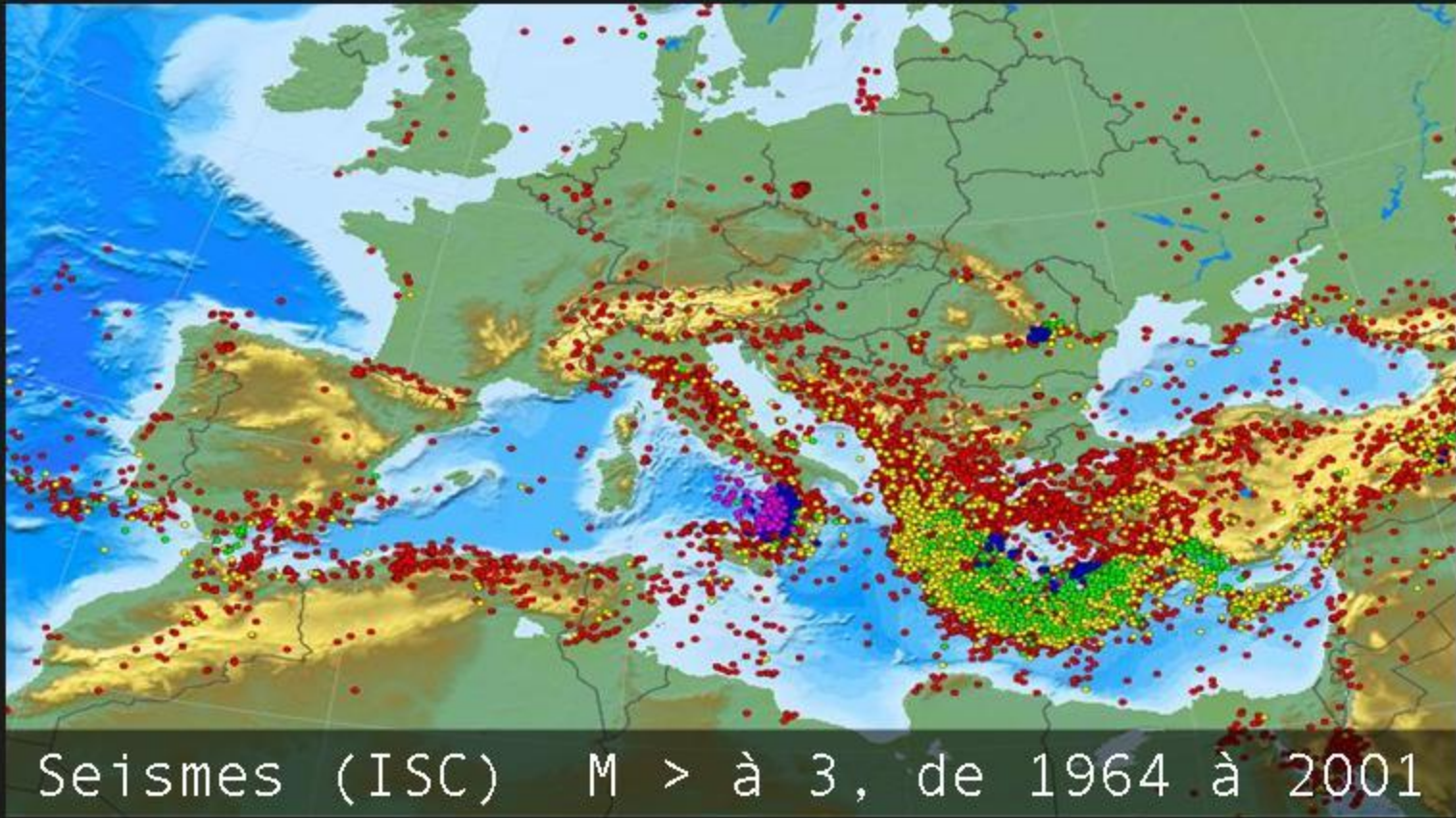
→ Annuelle, décennale, centenaire, ....

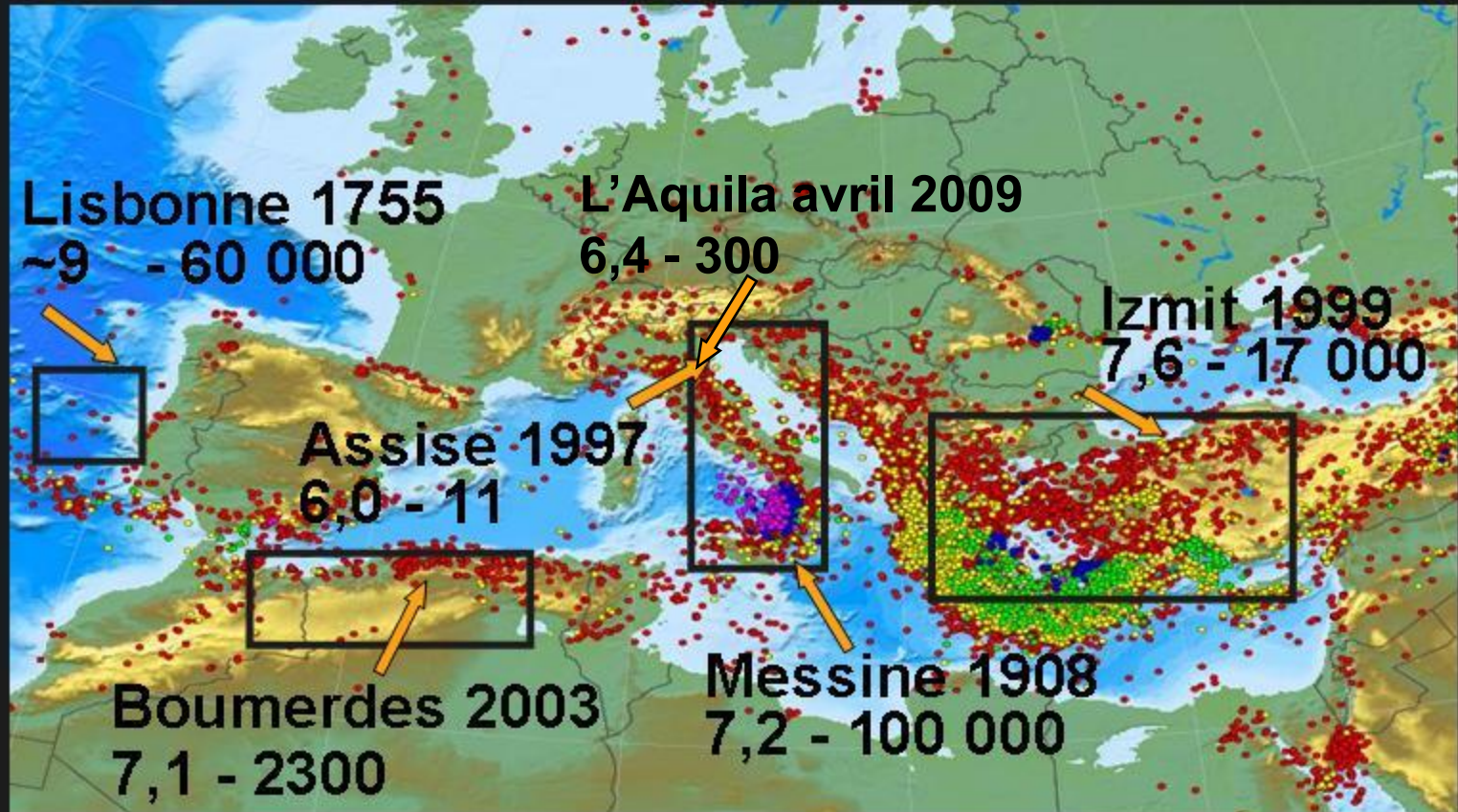




# Grands séismes en Méditerranée







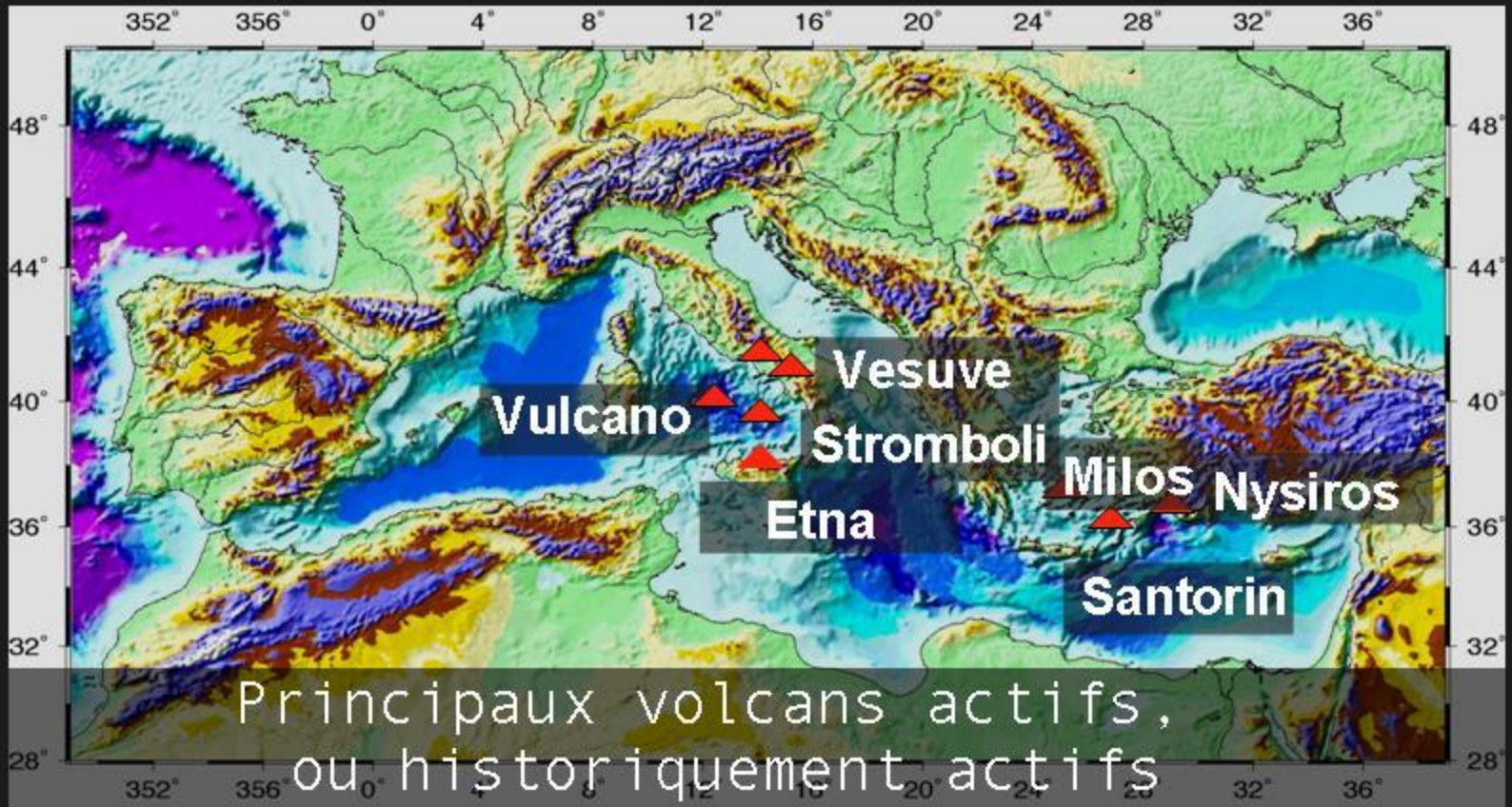


# Volcans en Méditerranée

2002-10-27  
N17 09:58 UTC  
Etna eruption  
www.fvulk.com

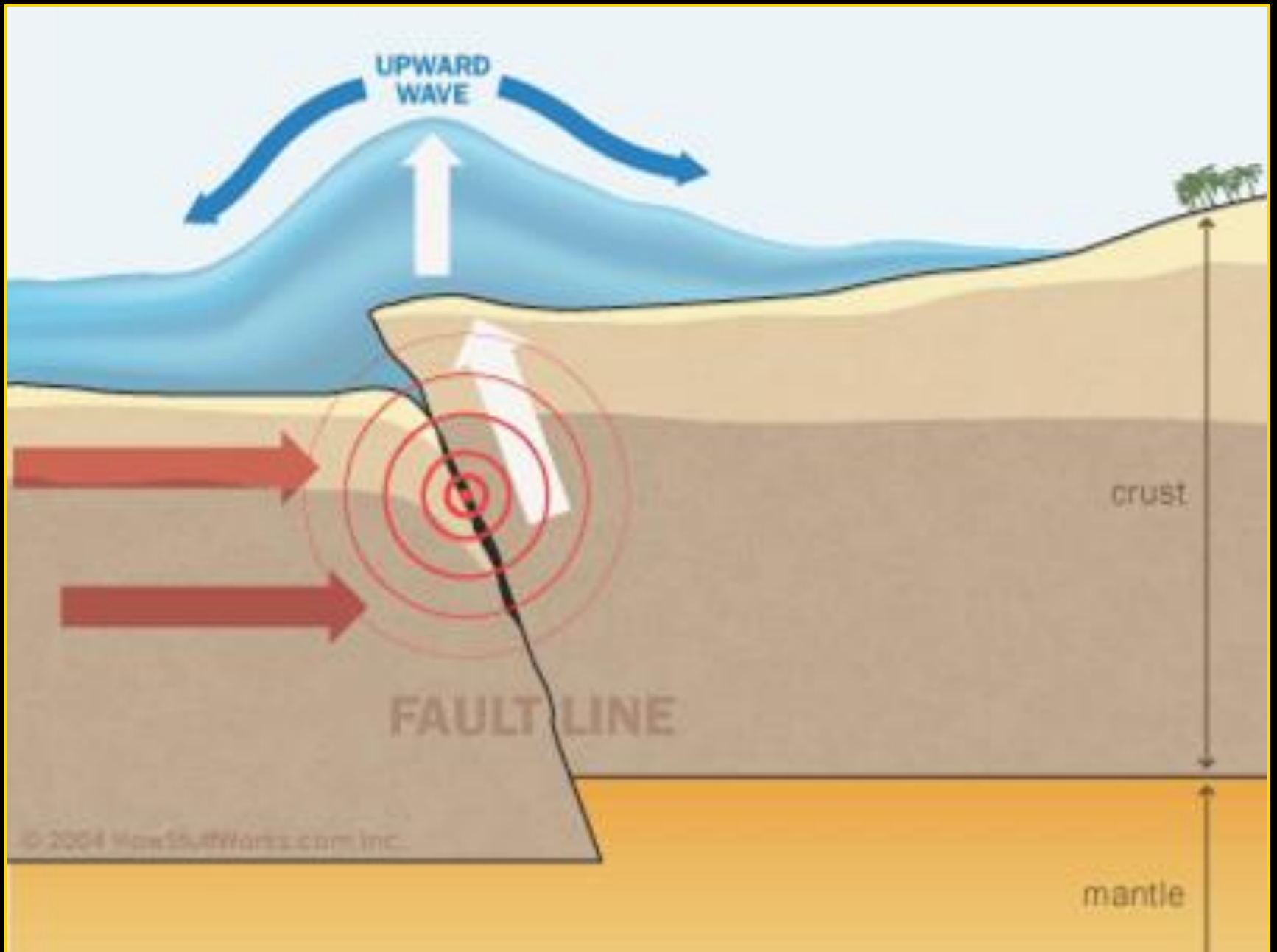
# Vésuve, Eoliennes, Etna

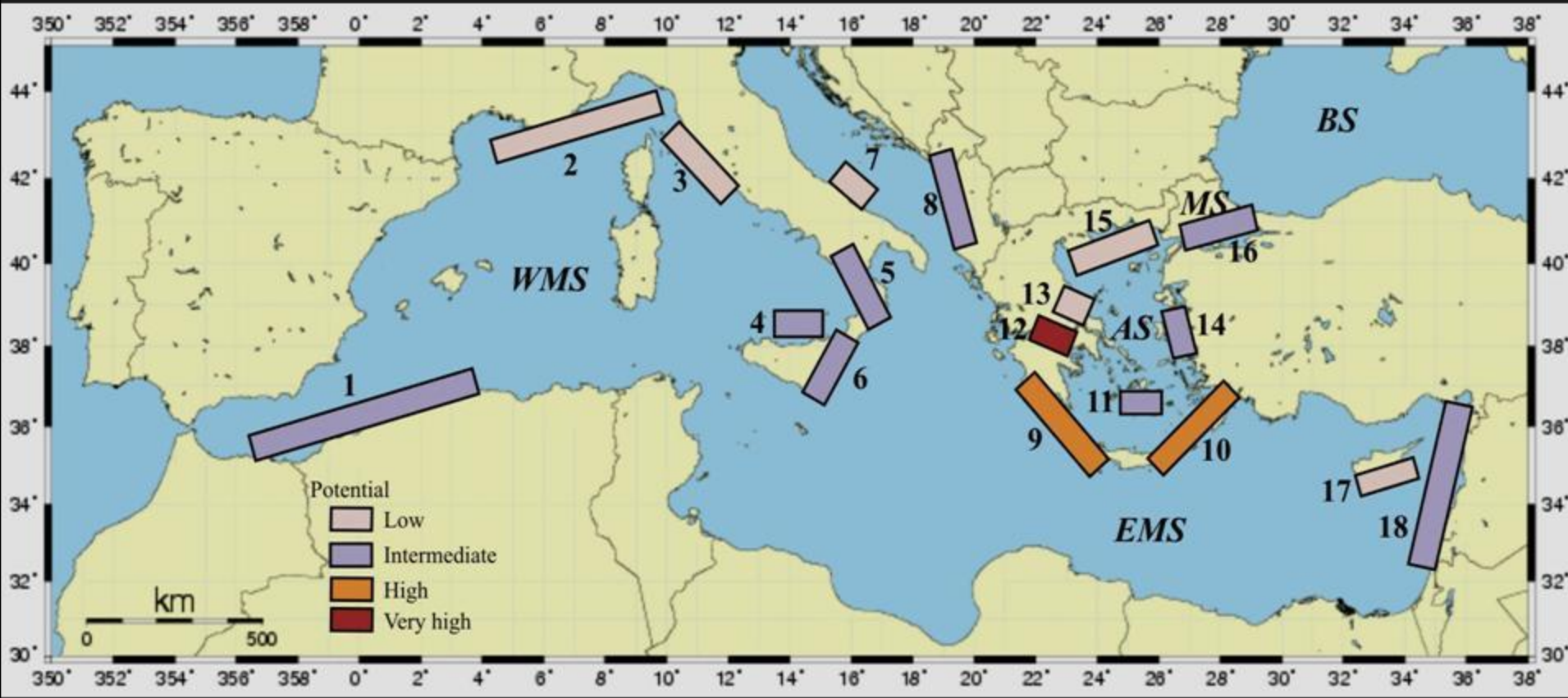




# Tsunamis historiques en Méditerranée









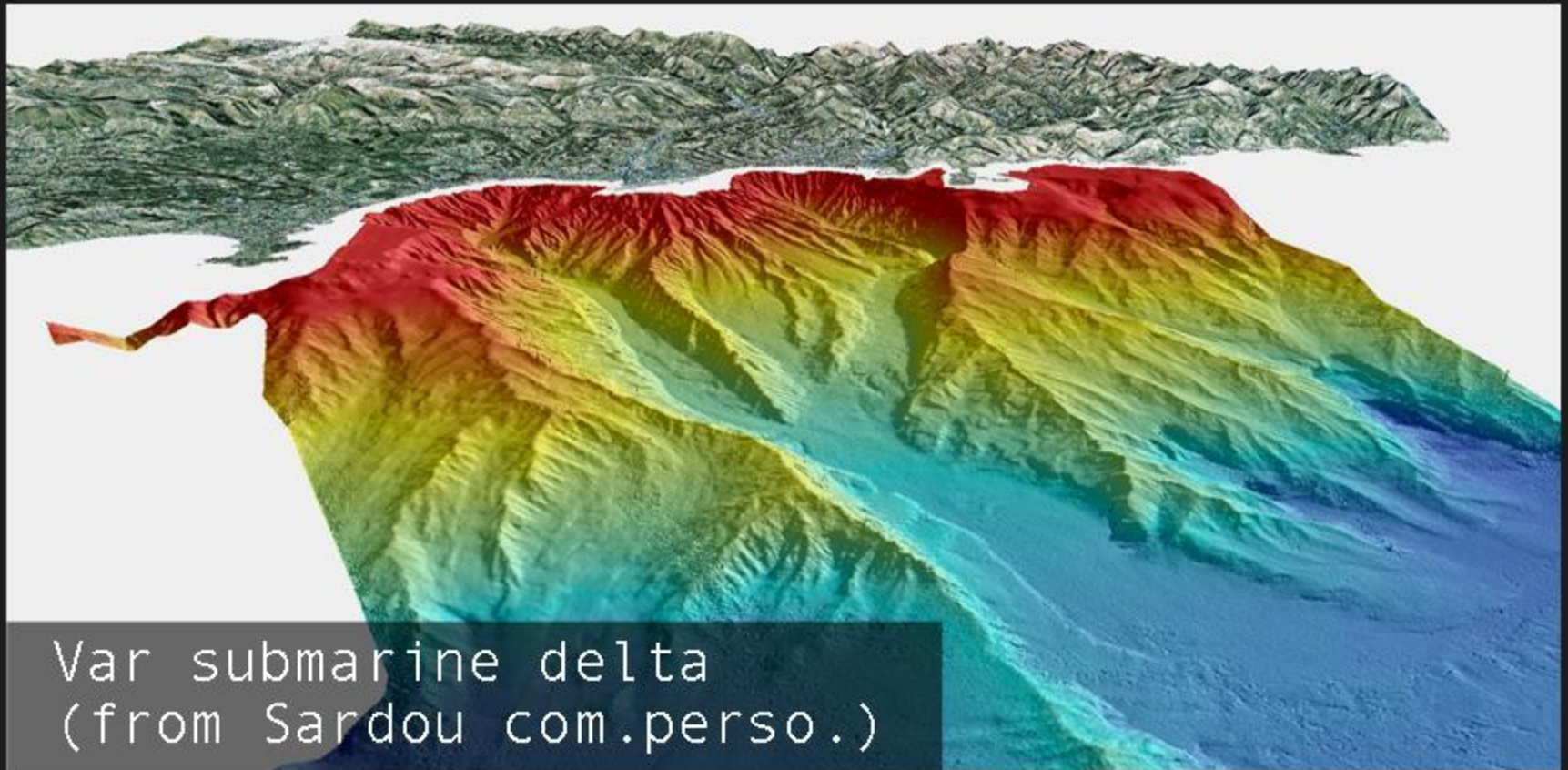


## Historical occurrences in the Mediterranean



- Serious destruction
- Moderate destruction
- Light destruction

Dots show epicenters of the earthquakes that caused tsunamis.







**Antibes, 16 octobre 1979**

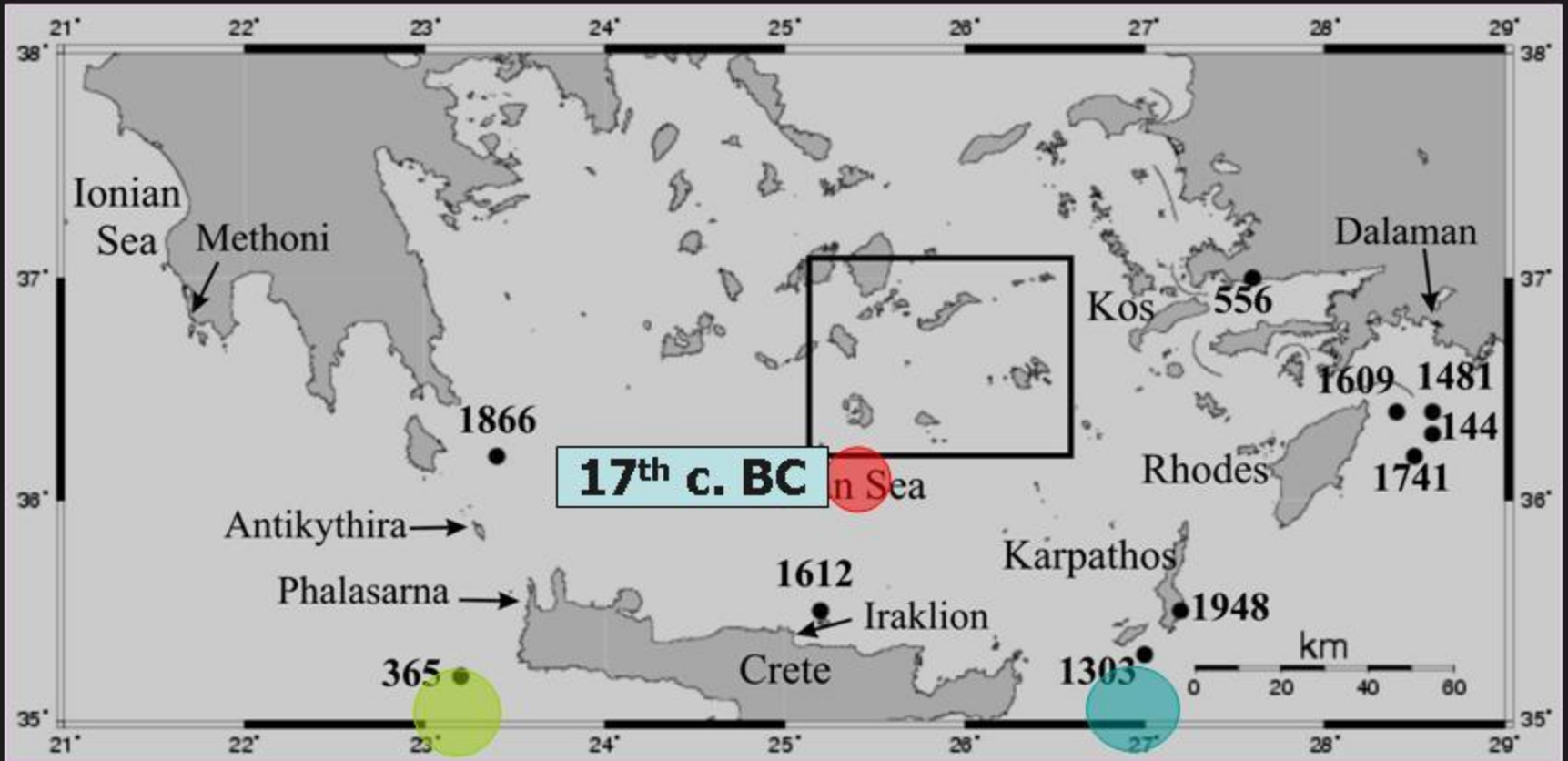
# Three main tsunamigenic sources

17th BC eruption

AD 365 EQ

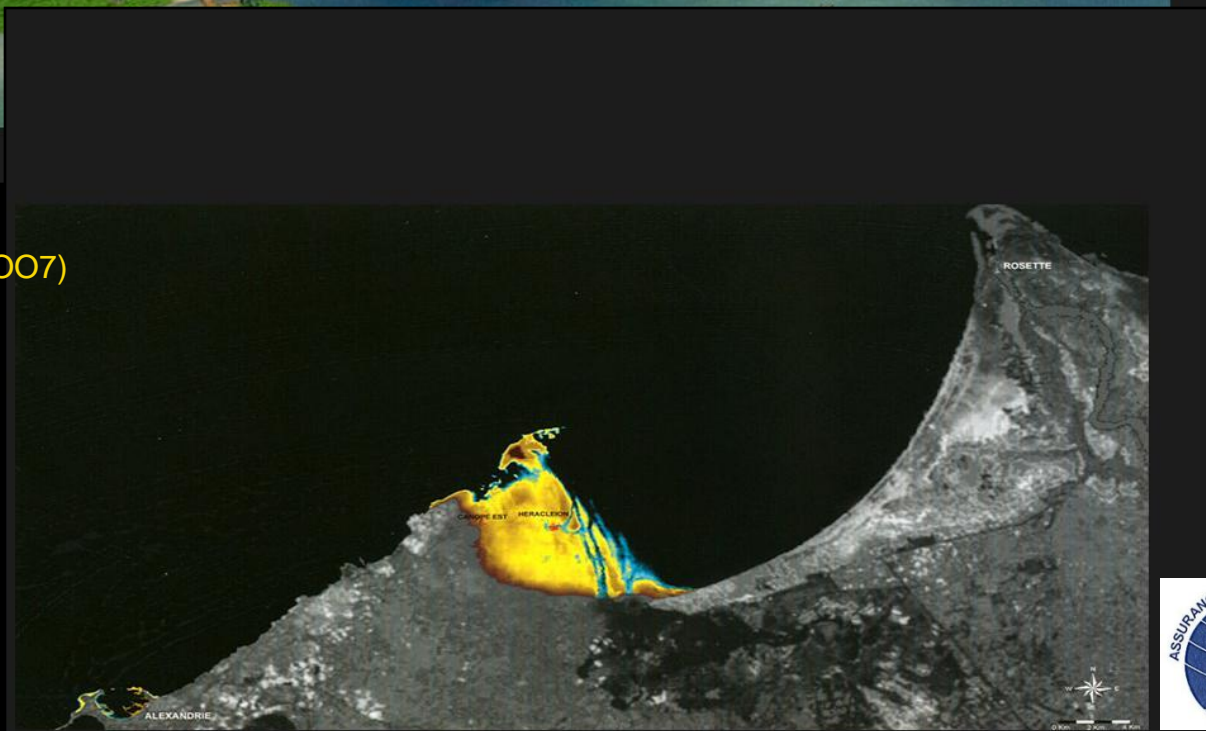
1303 EQ







Documents exposition  
Trésors engloutis d'Égypte  
(Franck Goddio; Paris hiver 2007)





# LE RENDEZ-VOUS DE L'ASSURANCE TRANSPORTS

*Cannes*

*28<sup>th</sup> and 29<sup>th</sup> April 2009*



CESAM



LE  
RENDEZ-VOUS  
DE CANNES