

WEEK 20, 2020



International COVID-19 Overview

From CESAM's Average Agents



Dear all,

In this current context linked to COVID-19, our first thoughts go to our Networks, Average Agents, recommended by our CESAM Group. They're facing new challenges everyday as countries try to cope with the COVID-19 pandemic.

**CESAM | International Department
Networks Unit
Mathilde DOCQUIERT**

We would like to warmly thank our Average Agents for this precious collaboration. The following sheets are directly completed by them, without modification of CESAM.

If you have any questions, feel free to contact them.

How to find our Average Agents on our CESAM website ? [Click here.](#)

COUNTRY INDEX

1. OVERSEAS FRANCE

GUADELOUPE
MARTINIQUE
NEW CALEDONIA

2. EUROPE

ALBANIA
AUSTRIA
BELGIUM
BULGARIA
CROATIA
CZECH REPUBLIC
ESTONIA
FINLAND
GERMANY
GREECE
ICELAND
ITALY
LATVIA
MALTA
MONTENEGRO
NETHERLANDS
NORWAY
POLAND
PORTUGAL
ROMANIA
SLOVENIA
SPAIN
SWITZERLAND
UKRAINE
UNITED KINGDOM

3. AFRICA

ALGERIA
CAMEROON
EGYPT
GABON
KENYA
IVORY COAST
MADAGASCAR
MALI
MAROCCO
MAURITANIA
NIGERIA
SENEGAL
SOUTH AFRICA
TCHAD
TANZANIA
TUNISIA

4. ASIA

BANGLADESH
CHINA
INDIA
JAPAN
KAZAKHSTAN
MALAYSIA
PHILIPPINES
SOUTH KOREA
SRI LANKA
TAIWAN
VIETNAM

5. CENTRAL AMERICA & SOUTH AMERICA

ARGENTINA
BOLIVIA
BRAZIL
CHILE
COLOMBIA
DOMINICAN REPUBLIC
EL SALVADOR
HONDURAS
MEXICO
NICARAGUA
PANAMA
PARAGUAY
PERU
URUGUAY
TRINIDAD & TOBAGO
VENEZUELA

6. NORTHERN AMERICA

USA

7. MIDDLE EAST

IRAQ
ISRAEL
JORDAN

8. PERSIAN GULF & GULF OF OMAN

OMAN
SAUDI ARABIA
UNITED ARAB EMIRATES

9. OCEANIA

AUSTRALIA

OVERSEAS FRANCE





Comité des Assureurs Maritimes et Transports

8, rue d'Artois – 75008 PARIS (France)

Tél. : (33.1) 58 56 96 00

Email : info@cesam.org

www.cesam.org

COVID-19 Overview

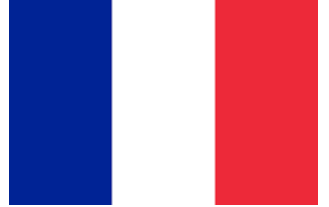
Date : 08/04/2020

Place/COUNTRY : GUADELOUPE

Name : MARSOLLE Steeve

Email : s.marsolle@polyexmar.fr

Phone : +590690338867



1. Main measures taken by government (max. 2 lines of explanation for each measure)

- CONFINEMENT** : Same than in France since March 17th 2020
- NON ESSENTIAL BUSINESS' CLOSURE** :
- BORDERS' CLOSURE** : Between French side and Dutch Side. Transportation of goods are maintained from both sides.
- OTHERS** :
- NONE** :

2. Port's situation (max. 10 lines)

All ports of Guadeloupe are operational and open (containers, RORO, fuel, cement and coal terminals) as usual. Inter islands traffic is normal.

Cruise ships are not authorized to birth except for loading goods or material.

3. Inland transports' situation (max. 10 lines)

Inland transports are operational and usual.

4. Airports' situation (max 5 lines)

Air traffic has been reduced by about 90% between Guadeloupe and Paris which affects the transport of goods.

Inter islands traffic is also reduced and operated by only 1 company. There are flights for Marie-Galante, Saint Martin and Fort-de-France but connections are not as often then usually.

5. Any import cargo treatment/decontamination (max 5 lines)

- NO
- YES

6. Possibilities of surveys

- NO
- YES

7. Specific information (max 5 lines)



Comité des Assureurs Maritimes et Transports

8, rue d'Artois – 75008 PARIS (France)

Tél. : (33.1) 58 56 96 00

Email : info@cesam.org

www.cesam.org

COVID-19 Overview

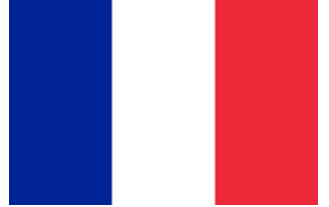
Date : April 20th 2020

Place/COUNTRY : Martinique

Name : COMAV972

Email : comav972@gmail.com

Phone : +33 646 728 014



1. Main measures taken by government (max. 2 lines of explanation for each measure)

CONFINEMENT : Closure of schools and educational institutions, public meetings prohibited, limited mobility under same rules as in France

NON ESSENTIAL BUSINESS' CLOSURE : Active

BORDERS' CLOSURE : Limited access for imperative needs with the exception of a quarantine of all passengers arriving by air or sea (with proof of travel).

OTHERS : Possibility to order by phone and delivery in front of the shop (drive in). Fruit and vegetable street vendors operate along the roads.

NONE :

2. Port's situation (max. 10 lines)

Free movement of goods – Pleasure navigation forbidden, some fishermem stay active

3. Inland transports' situation (max. 10 lines)

One person per vehicle. Buses and trucks for goods, no difficulties

4. Airports' situation (max 5 lines)

Closed, except 2 rotations per week for persons (Air France) and as necessary for goods on aircargo.

5. Any import cargo treatment/decontamination (max 5 lines)

NO

YES

6. Possibilities of surveys

NO

YES

7. Specific information (max 5 lines)

La baie du Marin, receive today 3 ships to unload units intended for the French Navy and load pleasure boats for Europe
The specific demands of the captains are more restrictive than expected. Delivery masks for the crew(zero onboard) should be prepared by Company on arrival To minimize contact only Loading Master and Pilot allowed on board. All paper works should be done on shore, signing and stamping by e-mail; All clients after mooring their yacht at position in the cargo hold should be picked up and leave the vessel by service boats via stern door, not coming up onboard ;Diving ops via stern door from diving boat, diving equipment and cylinders changing from diving boat only. Not allowed came up onboard. Shore welders and riggers not allowed on board as well. We operate the unloading survey under these restrictive conditions...



Comité des Assureurs Maritimes et Transports

8, rue d'Artois – 75008 PARIS (France)

Tél. : (33.1) 58 56 96 00

Email : info@cesam.org

www.cesam.org

COVID-19 Overview

Date : 29 April 2020

Place/COUNTRY : NEW CALEDONIA

Name : HPEXPERT

Email : h.piquemal@hpexpert.nc

Phone : +687 76 32 69



1. Main measures taken by government (max. 2 lines of explanation for each measure)

- CONFINEMENT** : Start 24 March / End 19 APRIL 2020 / bars still closed , / telework when possible
- NON ESSENTIAL BUSINESS' CLOSURE** :NO
- BORDERS' CLOSURE** :All commercial flight closed / few flights are maintained under NC Government and French authorities control / border close for all passengers' ship and fishing boats under foreign flag.
- OTHERS** : 14 days quarantines for all peoples arriving in New Caledonia in dedicated requisitioned Hotel and under medical survey + One week strict quarantine at home
- NONE** :

2. Port's situation (max. 10 lines)

Harbours opened, loading and unloading : Normal.
Specific health declaration before ship arrival, control at arrival by health officer.
Nickel ore export / working -
Passengers ship prohibited
Foreign fishing boats prohibited
Leisure boats from abroad / 14 days confinement compulsory at arrival/ health procedure
All crew must stay on board.
Crew change is impossible because there is no plane .

3. Inland transports' situation (max. 10 lines)

Normal
Passengers transport still prohibited between main island and the loyalties islands (MARE LIFOU OUEVA and the isle of pine)
General cargo between main island and loyalties island agreed / crew of coasters must stay on board.

4. Airports' situation (max 5 lines)

Airport closed.
Very Few planes from Europ via japan and Australia for medicines and to repatriate local new Caledonian citizen.

5. Any import cargo treatment/decontamination (max 5 lines)

- NO**

6. Possibilities of surveys

- YES** but takes time to be organised

7. Specific information (max 5 lines)

RELIABLE WEBSITE FOR INFO ABOUT COVID IN NEW CALEDONIA : <https://gouv.nc/coronavirus> IN FRENCH ONLY But daily Updated)

EUROPE





Comité des Assureurs Maritimes et Transports

8, rue d'Artois – 75008 PARIS (France)

Tél. : (33.1) 58 56 96 00

Email : info@cesam.org

www.cesam.org

COVID-19 Overview

Date : 21/04/2020

Place/COUNTRY : Albania

Name : Samer & Misa Sh.p.k.

Email : samer-misa@samer-misa.com

Phone : +355 682024704



1. Main measures taken by government (max. 2 lines of explanation for each measure)

- CONFINEMENT** : Non closed business are allowed to work without restrictions.
- NON ESSENTIAL BUSINESS' CLOSURE** :Included; bars, restaurants, museums.
- BORDERS' CLOSURE** :Albanian borders (sea, air, road) are closed for all passengers.
- OTHERS** :
- NONE** :

2. Port's situation (max. 10 lines)

Ports are operative and currently handle cargo, container and Ro/ro vessels. The crew of the ships are not allowed to go ashore. No embarkations or disembarkations are allowed. The ferry lines are still operative, but transporting only trucks and trailers, no passengers allowed onboard. Yachts and cruise ships are allowed to enter port for food, water and bunker supplies. As soon as these operations are concluded, they will have to leave the port.

3. Inland transports' situation (max. 10 lines)

Trucks and vehicles engaged in transportation for industry and vital activities are allowed to move without limitations. Under special permission from the Directory of Policy, also the private cars may move without limitation. Public transportation is frozen.

4. Airports' situation (max 5 lines)

All flights have been cancelled.

5. Any import cargo treatment/decontamination (max 5 lines)

- NO**
- YES**

6. Possibilities of surveys

- NO**
- YES**

7. Specific information (max 5 lines)

The country activity is slowly opening. This week also other business activities like clothe stores etc. have been opened. Next week other business activities will be possible to open. Supermarkets, pharmacies, banks etc are allowed to work 05:00 LT-17:30 LT.



Comité des Assureurs Maritimes et Transports

8, rue d'Artois – 75008 PARIS (France)

Tél. : (33.1) 58 56 96 00

Email : info@cesam.org

www.cesam.org

COVID-19 Overview

Date : 2 April 2020

Place/COUNTRY : Venna & Salzburg, Austria

Name : SV Büro Ing. Dipl.-Ing. (FH) Christian Eissner

Email : office@sv-eissner.com

Phone : +43 676 612 5782

1. Main measures taken by government (max. 2 lines of explanation for each measure)

- CONFINEMENT** : strict stay at home policy, workers are allowed to travel directly from home to work and back. Max. amount of people together 2, otherwise they have to keep a distance of min. of 2 meters. Since Wednesday, masks are required for markets and have to be worn (depending on availability) Only food markets are open, everything else is closed. Self employed people can travel to their business.
- NON ESSENTIAL BUSINESS' CLOSURE** : Restaurants are closed, take away or delivery only.
- BORDERS' CLOSURE** : Some border's are strictly closed (Hungary), only delivery trucks are allowed to cross. Sometimes truck traffic back up towards the Hungarian border of 15km. Workers are not allowed to cross the Hungarian border, on other borders only with a written confirmation issued by the employer.
- OTHERS** :
- NONE** :

2. Port's situation (max. 10 lines)

As of now, ports are open for delivery only, no passenger travel.

3. Inland transports' situation (max. 10 lines)

At the moment, no restrictions, weekly truck driving ban partially lifted.

4. Airports' situation (max 5 lines)

Airports are completely closed for travel, partially cargo transport possible.

5. Any import cargo treatment/decontamination (max 5 lines)

- NO
- YES

6. Possibilities of surveys

- NO
- YES

7. Specific information (max 5 lines)

Please feel free to inquire.



Comité des Assureurs Maritimes et Transports

8, rue d'Artois – 75008 PARIS (France)

Tél. : (33.1) 58 56 96 00

Email : info@cesam.org

www.cesam.org

COVID-19 Overview

Date : 28 April 2020

Place/COUNTRY : Antwerp/ Belgium

Name : Carlos Maenhout

Email : carlos.maenhout@bmtglobal.com

Phone : +32475415969



1. Main measures taken by government (max. 2 lines of explanation for each measure)

- CONFINEMENT : especially for private life.
- NON ESSENTIAL BUSINESS' CLOSURE : will be modestly allowed again as from 15 May
- BORDERS' CLOSURE : all borders closed but not for our surveyors who have the documents to proof that they cross the border for work purposes
- OTHERS :
- NONE :

2. Port's situation (max. 10 lines)

Belgian ports are still active but there are considerable less ship movements

3. Inland transports' situation (max. 10 lines)

No restrictions but significantly less cargo to be transported, especially in the dry cargo section

Also liquid transport slackens

4. Airports' situation (max 5 lines)

Restricted; only few planes

5. Any import cargo treatment/decontamination (max 5 lines)

- NO
- YES

6. Possibilities of surveys

- NO
- YES

7. Specific information (max 5 lines)

Some terminals in Antwerp Port such as Zuidnatie do not allow access to surveyors any more

COVID-19 Overview

Date : 30.04.2020

Place/COUNTRY : Bulgaria

Name : Kalimbassieris Maritime Bulgaria

Email : varna@kalimbassieris.com

Phone : (+359) 52600338



1. Main measures taken by government (max. 2 lines of explanation for each measure)

- CONFINEMENT : Strict restrictions on general public movements and curfew at weekends
- NON ESSENTIAL BUSINESS' CLOSURE :
- BORDERS' CLOSURE : Land border with Turkey closed. Non-EU passengers not allowed to enter Bulgaria, except residents and families.
- OTHERS :
- NONE :

2. Port's situation (max. 10 lines)

Ports and terminals continue to be operational in strict observance of governmental orders. Cargo operations and repairs are allowed on the basis of minimal contact and obligatory PPE. Checks on board are carried out by Border Health Inspectors.

3. Inland transports' situation (max. 10 lines)

Curfew restrictions.

4. Airports' situation (max 5 lines)

Turkey's land border with Bulgaria has been closed to the entry and exit of passengers. Passengers from outside the European Union are not allowed to enter Bulgaria, except for residents and their families.

5. Any import cargo treatment/decontamination (max 5 lines)

- NO – No decontamination/specific cargo treatment for imports as far as we are aware of.
- YES

6. Possibilities of surveys

- NO
- YES

7. Specific information (max 5 lines)

Crew changes, though not explicitly forbidden, are practically impossible given the logistical challenges with cancelled flight to most destinations and curfew restrictions on internal travel.

COVID-19 Overview

Date : 29th April 2020

Place/COUNTRY : CROATIA

Name : SAMER & GRADIŠAR d.o.o.

Email : samer.gradisar@samer.com

Phone : +38551315190



1. Main measures taken by government (max. 2 lines of explanation for each measure)

- CONFINEMENT** : movement between Counties with permits only is still under force.
- NON ESSENTIAL BUSINESS' CLOSURE** : most businesses are in process of re-opening as of 4th /11th May 2020 but with restrictions imposed, public transport will be allowed with restricted number of people on the bus/train/boat i.e. filled capacity of 25 – 50%. Prohibition of work on Sunday.
- BORDERS' CLOSURE** : Cargo and passenger transit allowed with recommendation to keep social distancing.. Croatian residents are allowed to return to the country with 14 day home isolation measures imposed and people working abroad are allowed to exit, short visit exits/entries to the country are prohibited.
- OTHERS** :
- NONE** :

2. Port's situation (max. 10 lines)

Ferry lines are very limited. As of 26th April international line Zadar – Ancona is allowed to sail for transport of cargo vehicles only. Container and general cargo transport operates normally but with protection measures imposed.

3. Inland transports' situation (max. 10 lines)

Transit of international cargo vehicles is allowed by driving on fast roads/ highway only, social distancing measures are recommended as well as wearing masks.

4. Airports' situation (max 5 lines)

Domestic and international flights are reduced/ canceled up to 90%

5. Any import cargo treatment/decontamination (max 5 lines)

- NO
- YES

6. Possibilities of surveys

- NO
- YES

7. Specific information (max 5 lines)

COVID-19 Overview

Date : 13.5.2020

Place/COUNTRY : Prague, CZECH REPUBLIC

Name : CRScz (CLAIMS AND RECOVERY SERVICES)

Email : info@crs.eu.com

Phone : +420 731 806 083



1. Main measures taken by government (max. 2 lines of explanation for each measure)

- CONFINEMENT** : State of Emergency extended to 17.5.2020. Stay@home policy not compulsory anymore, groups of less than 10 people allowed on public (not applicable for families). Wearing face masks on public compulsory #masks4all.
- NON ESSENTIAL BUSINESS' CLOSURE** : Shops and services with area smaller than 5000 m2 opened again. Restaurants allowed to be opened for take away – sale through a window – and/or with outside seating area. All with strict hygiene rules. Further release of restrictions planned for 25.5.2020.
- BORDERS' CLOSURE** :Czech citizens can travel abroad again, but can return only with negative coronavirus test (not older than 4 days) or have to stay in quarantine 2 weeks after return.
- OTHERS** : “Smart Quarantine” system in place – using mobile technologies to track and trace and/or monitor potential/existing patients.

2. Port's situation (max. 10 lines)

n/a

3. Inland transports' situation (max. 10 lines)

No limits applied. Operation of personal transportation services renewed.

4. Airports' situation (max 5 lines)

Prague International Airport operating.

5. Any import cargo treatment/decontamination (max 5 lines)

NO

YES

6. Possibilities of surveys

NO

YES

7. Specific information (max 5 lines)

So far, operation of our agency has not been affected. As we are fully digital, our team members work mostly from home or from our new office (Argentinska 36, 170 00 Prague 7, Czech Republic) and surveys are conducted as usual, if access is granted by the consignee. However, number of new instructions decreased and in some cases, we were asked to postpone the survey to a later date.



Comité des Assureurs Maritimes et Transports

8, rue d'Artois – 75008 PARIS (France)

Tél. : (33.1) 58 56 96 00

Email : info@cesam.org

www.cesam.org

COVID-19 Overview

Date : 30th March 2020

Place/COUNTRY : ESTONIA

Name : Lars Krogius Baltic / Sirje Lubi

Email : Estonia@krogius.com

Phone : +3726116620



1. Main measures taken by government (max. 2 lines of explanation for each measure)

- CONFINEMENT:** Measures implemented by the Estonian Government include closure of schools and all other educational institutions, restrictions on public meetings and mobility, increase in social and health care capacities, restrictions on border traffic. Emergency situation has been declared on 12.03.2020, valid until 01.05.2020 / until further notice. Traffic and movement between Estonian mainland and Islands Saaremaa and Hiiuamaa is limited.
- NON ESSENTIAL BUSINESS' CLOSURE:** Cafes, restaurants, bars are closed only take-away is allowed. Museums, theatres, cinemas, libraries, swimming pools, shopping centres, etc. public meeting places are closed.
- BORDERS' CLOSURE:** Passenger traffic restricted in borders
- OTHERS :**
- NONE :**

2. Port's situation (max. 10 lines)

Free movement of goods still applies and working as usual

3. Inland transports' situation (max. 10 lines)

Free movement of goods still applies

4. Airports' situation (max 5 lines)

Free movement of goods still applies, LH still operates

5. Any import cargo treatment/decontamination (max 5 lines)

- NO
- YES

6. Possibilities of surveys

- NO
- YES

7. Specific information (max 5 lines)

All restrictions and regulations are subject of changes following development of circumstances

COVID-19 Overview

Date : 22nd April 2020

Place/COUNTRY : Helsinki, Finland

Name : Oy Lars Krogius Ab / Hanna Kivelä

Email : finland@krogius.com

Phone : +358 9 4763 6300



1. Main measures taken by government (max. 2 lines of explanation for each measure)

- CONFINEMENT** : Measures implemented by the Government include that schools and educational institutions have been closed, restrictions have been applied to public meetings, travel and border crossing, and the capacity of social and health care services are being increased. These restrictions will be in force until 13 May. The Government also restricted traffic and movement between the Uusimaa region and Finland's other regions during the period of 27 March - 16 April 2020.
- NON ESSENTIAL BUSINESS' CLOSURE** :Café's, restaurants, bars are closed and only allowed to sell take-away. Libraries, swimming pools and other public meeting places are closed.
- BORDERS' CLOSURE** :Passenger traffic restricted in ports, airports and borders.
- OTHERS** :
- NONE** :

2. Port's situation (max. 10 lines)

Free movement of goods still applies and working as usual.

3. Inland transports' situation (max. 10 lines)

Free movement of goods applies and working as usual.

4. Airports' situation (max 5 lines)

Free movement of goods still applies and working as usual.

5. Any import cargo treatment/decontamination (max 5 lines)

- NO
- YES

6. Possibilities of surveys

- NO
- YES

7. Specific information (max 5 lines)

Our office staff is mainly working from homes, surveyors attend places of surveys with respect of the wishes of all parties at any survey location. Our management closely monitors updates from local authorities and strictly follows guidelines and advice. We are available at all times to answer your questions.



Comité des Assureurs Maritimes et Transports

8, rue d'Artois – 75008 PARIS (France)

Tél. : (33.1) 58 56 96 00

Email : info@cesam.org

www.cesam.org

COVID-19 Overview

Date : 06.May 2020

Place/COUNTRY : Bremen / Germany

Name : Reck & Co.GmbH

Email : claims@reck.de

Phone : +49 421 59834 16



1. Main measures taken by government (max. 2 lines of explanation for each measure)

CONFINEMENT : as per official announcement of 06 May 2020 contact restrictions are a little weakened, but will generally remain in force until 5.June. Masks covering mouth and nose must be worn in public transport and in shops. Major events forbidden further on until 31 August 2020. Reopening of businesses put at the discretion of federal states as long as the rate of new infections per week remains below 50 per 100.000 inhabitants of the respective region.

NON ESSENTIAL BUSINESS' CLOSURE : Reopening of Businesses is put at the discretion of the federal states and thus differs inside Germany from state to state slightly. In general shops are in the course of reopening. Restaurants and bars may reopen in some states if they can provide a proper set up and protection plan, ensuring 1,5m distance between tables, when seated.

BORDERS' CLOSURE : Borders closure were slightly reduced. Crossing always allowed for cross border commuters and cargo, but all traffic is checked, so waiting times at the border do occur.

OTHERS :

NONE :

2. Port's situation (max. 10 lines)

Ports still open and working. Surveying still possible under usual rules precautions.

3. Inland transports' situation (max. 10 lines)

No restriction, but extended possibilities for road transport during weekend. Weekend driving bans for trucks partly lifted.

4. Airports' situation (max 5 lines)

No private travel allowed except well-reasoned and emergencies. Freight /cargo handling no restriction. Surveys possible under usual precautions.

5. Any import cargo treatment/decontamination (max 5 lines)

NO

YES

6. Possibilities of surveys

NO

YES

7. Specific information (max 5 lines)

Upon specific request



Comité des Assureurs Maritimes et Transports

8, rue d'Artois – 75008 PARIS (France)

Tél. : (33.1) 58 56 96 00

Email : info@cesam.org

www.cesam.org

COVID-19 Overview

DATE : 30.04.2020

Place/COUNTRY : Greece

Name : Kalimbassieris Maritime

Email : pir.maritime@kalimbassieris.com

Phone : +30 210 4294444



1. Main measures taken by government (max. 2 lines of explanation for each measure)

- CONFINEMENT** : Strict restrictions on general public movements but work related movements/ transportation continues. Gradual relaxation of measures expected from 04.05.20 onwards.
- NON ESSENTIAL BUSINESS' CLOSURE** : Most retail and services businesses are currently closed, but expected to resume operations gradually from 04.05.2020 onwards.
- BORDERS' CLOSURE** : Prohibition of entry into Greece to non-EU and non-Schengen citizens is currently in force. Compulsory 14-day quarantine at home for any individuals entering Greece from abroad.
- OTHERS** :
- NONE** :

2. Port's situation (max. 10 lines)

Commercial ports, private terminals, shipyards and repair zones continue to be operational across Greece. Cargo operations are allowed as usual with minimal contact between vessel's crew and port personnel recommended. Crew disembarkation is not allowed. Compulsory use of PPE for crew, shore staff and all visitors. No requirement for 14-day quarantine at roads for cargo vessels. Crew changes are generally limited to EU or Schengen citizens and subject to the 14-day quarantine rule.

3. Inland transports' situation (max. 10 lines)

Work related movements/ transportation continues but strict restrictions on general public movements.

4. Airports' situation (max 5 lines)

Passenger flights to and from Greece are limited with air connections to and from Italy, Spain, Turkey, United Kingdom, the Netherlands and Germany temporarily suspended. Flights to Germany available only to/from Athens airport. Specific exemptions apply (e.g. cargo, sanitary, humanitarian flights).

5. Any import cargo treatment/decontamination (max 5 lines)

- NO** – No decontamination/specific cargo treatment for imports as far as we are aware of.
- YES**

6. Possibilities of surveys

- NO**
- YES**

7. Specific information (max 5 lines)

All sea and air connections for passenger transportation between Greece to Italy and between Greece to Albania are temporarily restricted including private pleasure yachts. Sailing of passenger vessels including cruise ships, private or professional yachts/ pleasure crafts and passenger disembarkation are temporarily prohibited within Greek territory. Ro-ro ferries continue their service between Greek mainland and the islands but only for the movements of permanent island residents, supplies and cargoes.

COVID-19 Overview

Date : 1 April 2020

Place/COUNTRY : Iceland

Name : Dagbjört Snjólaug Oddsdóttir, general counsel at Könnun ehf.

Email : konnun@konnun.is

Phone : 00354 867 0822



1. Main measures taken by government (max. 2 lines of explanation for each measure)

- CONFINEMENT** : Icelandic authorities have banned gatherings of over 20 people. However, grocery stores and pharmacies may still allow up to 100 people inside at once, provided that space allows for a 2-metre distance between individuals. Authorities have ordered the closure of gyms, bars, swimming pools, clubs, etc.
- NON ESSENTIAL BUSINESS' CLOSURE** : Authorities have ordered the closure of businesses with close client contact, such as gyms, hairdressers, bars, swimming pools, clubs, etc. Transport is still considered essential business.
- BORDERS' CLOSURE** : Icelandic borders are closed temporarily for people from countries outside the EEA and EFTA.
- OTHERS** :
- NONE** :

2. Port's situation (max. 10 lines)

Currently under normal operation.

3. Inland transports' situation (max. 10 lines)

All roads are open so inland transportation is not affected. Inland transport businesses have adopted working methods reflecting requirements implemented by the Icelandic Authorities, i.a. by respecting the 2-metre distance rule and adopting sanitary controls.

4. Airports' situation (max 5 lines)

Airport activities related to cargo transport are proceeding as normally. All Icelandic airports are still open, but with limited activities and all of the airports have implemented special instructions and procedures to meet requirements set by the Icelandic Authorities.

5. Any import cargo treatment/decontamination (max 5 lines)

- NO
- YES

6. Possibilities of surveys

- NO
- YES

7. Specific information (max 5 lines)

For more detailed information, we refer to an Icelandic website launched specifically to offer important information regarding Covid19 and operated by the Icelandic Health Authorities, www.covid.is. Our office in Reykjavík, Iceland is open as usual and we are working at the office and also remotely from home.



Comité des Assureurs Maritimes et Transports

8, rue d'Artois – 75008 PARIS (France)

Tél. : (33.1) 58 56 96 00

Email : info@cesam.org

www.cesam.org

COVID-19 Overview

Date : 5th May 2020

Place/COUNTRY : Livorno and Bari / ITALY

Name : Capanna Marine Srl

Email : capanna@capanna.it

Phone : +39 0586 894132 (Livorno) and +39 080 9262506 (Bari)



1. Main measures taken by government (max. 2 lines of explanation for each measure)

- CONFINEMENT** : “Stay at Home” policy and “Social Distancing” measures are in force (all over Italy). See also item 7 below.
- NON ESSENTIAL BUSINESS' CLOSURE** : Progressive reopening of selected non-essential business (subject to compliance with strict Covid-19 prevention measures) is in force from 4th May 2020, to be confirmed or modified according to the trend of the pandemic. See also item 7 below.
- BORDERS' CLOSURE** :

2. Port's situation (max. 10 lines)

Ports in Italy are open. Loading, discharge, handling and circulation of goods are allowed. Cruise vessels traffic suspension has been introduced for all Italian ports as from 19th March 2020 up to 13th April and further extended latest up to 17th May (subject to further extension depending on the trend of the pandemic).

Terminals, stevedores and logistic activities are operating under strict rules and safety conditions to safeguard all operators, stevedores and crew members from potential exposure (normal body temperature, required PPE such as masks, gloves, availability of hydro-alcoholic solution in order to sanitize hands, minimum distance between workers/crew, limited access to ship's enclosed spaces, etc.).

3. Inland transports' situation (max. 10 lines)

No restrictions, subject of course to compliance with Covid-19 measures taken by the Government and Regional Authorities.

4. Airports' situation (max 5 lines)

No restrictions, but cancellation of flights and diminution of passengers up to 80-90% is currently faced.

5. Any import cargo treatment/decontamination (max 5 lines)

- NO
- YES

6. Possibilities of surveys

- NO
- YES

7. Specific information (max 5 lines)

People are requested not to move, except for proved working need or health reasons or situations of necessity, subject to use of medical face masks (to date compulsory in some Regions only) and exhibition – if requested by the Authorities – of a duly completed self-certification form attesting the reasons for the move. A false declaration is an offence.

Essential business (i.e. that allowed to operate, subject of course to compliance with Covid-19 prevention measures taken by the Government and Regional Authorities) includes average agents and surveyors, logistic operators, ship agents and freight forwarders, Customs brokers, etc..

“Phase 2” for lockdown easing started as from 4th May: people allowed to move around their own regions, but not between different regions; some 4 millions workers (re-opening of business offices and some industrial activities in the sectors of automotive, fashion, furnishings, mining and textile) across Italy returned to work keeping social distancing and preventions measures, as appropriate.

On next 18th May and 1st June are planned further steps for lockdown easing.



Comité des Assureurs Maritimes et Transports

8, rue d'Artois – 75008 PARIS (France)

Tél. : (33.1) 58 56 96 00

Email : info@cesam.org

www.cesam.org

COVID-19 Overview

Date : 16th April 2020

Place/COUNTRY : Latvia, Riga

Name : Sergey Batmanov

Email : bkriga@bk.lv

Phone : +371 29 205680

1. Main measures taken by government (max. 2 lines of explanation for each measure)

- CONFINEMENT :
- NON ESSENTIAL BUSINESS' CLOSURE :
- BORDERS' CLOSURE :
- OTHERS : Quarantine, remote management

2. Port's situation (max. 10 lines)

No limitation for ships movement. Pre-entry report about crew, no boarding or disembarking except emergency.

All international passenger transportation was stopped from 17 March 2020. Currently only special voyages required for repatriation of the residents from abroad are performed.

Prior to entering the port all ship agents of all cargo ships calling at the ports shall provide the port authorities with accurate information on the composition of the ship's crew and the health status of all crew members. Any cases of illness or bad feeling among the members of the crew are to be reported to the authorities.

The crews of foreign-flagged vessels calling at the Freeport of Riga shall be prohibited from coming ashore, except the specific cases to be agreed upon when necessary for the normal operation of the ship. Crew change in Latvia is currently prohibited, due to closed borders and restrictions in the ports. In case of emergency (accidents on board, illness of a crewmember), or in case where change involves only Latvian crewmembers, the authorities must be contacted prior to any actions are taken. Transportation of rotation crew by the vessels of the port auxiliary fleet: pilot vessels, towboats and sanitary water collection vessels, shall be strictly prohibited.

All activities related to cargo handling and ship maintenance shall be performed to minimize physical contact between persons. The ships must refrain from current vessel repair and maintenance works by involving shore personnel, to the extent possible.

Specific internal procedures have been introduced and changes made to operating procedures to minimize physical contact among shift employees, as well as any contact with crews of incoming ships. Pilots and other port personnel who, due to their duties, cannot avoid meeting with crew members shall be provided with personal protection and disinfection agents. Contacts between the vessel crew and pilot or vessel inspector is to be organised by observing distance of at least 2 metres.

3. Inland transports' situation (max. 10 lines)

Cargo transportation under strict control.

4. Airports' situation (max 5 lines)

No regular flights, only special charters. All international passenger transportation was stopped from 17 March 2020. Currently only special voyages required for repatriation of the residents from abroad are performed.

5. Any import cargo treatment/decontamination (max 5 lines)

- NO
- YES

6. Possibilities of surveys

- NO
- YES

7. Specific information (max 5 lines)

COVID-19 Overview

Date : 06th April 2020

Place/COUNTRY : Malta

Name : O.F. Gollcher & Sons Ltd

Email : survey@gollcher.com

Phone : +356 99422165 / +356 77647742



1. Main measures taken by government (max. 2 lines of explanation for each measure)

- CONFINEMENT** : All individuals over the age of 65 are to stay at home. Travellers have to self-quarantine for 14 days from arrival, together with any persons living with them. Mandatory quarantine for individuals who had direct contact with someone who was diagnosed with Covid 19.
- NON ESSENTIAL BUSINESS' CLOSURE** : Shops selling non-essential goods, gyms, theatres, restaurants and leisure outlets have been closed.
- BORDERS' CLOSURE** : Limited amount of flights.
- OTHERS** : Schools and gatherings were also suspended.
- NONE** :

2. Port's situation (max. 10 lines)

Both main Maltese ports, namely Malta Freeport Terminal and Valletta Grand Harbour, are still operative.

3. Inland transports' situation (max. 10 lines)

Inland transport, as in trailers, containers and delivery trucks was not affected.

4. Airports' situation (max 5 lines)

Passenger traffic was suspended, however a number of airlines are still providing airfreight services.

5. Any import cargo treatment/decontamination (max 5 lines)

- NO**
- YES**

6. Possibilities of surveys

- NO**
- YES**

7. Specific information (max 5 lines)

As a company we are mainly operating from our homes, however momentarily our services have not been adversely affected. We are not in a position to board vessels as this would result in an automatic imposed 14 days quarantine.



Comité des Assureurs Maritimes et Transports

8, rue d'Artois – 75008 PARIS (France)

Tél. : (33.1) 58 56 96 00

Email : info@cesam.org

www.cesam.org

COVID-19 Overview

Date :06th April 2020

Place/COUNTRY : MONTENEGRO

Name :Samer & Strugar Shipping, Bar – Daniela Strugar

Email :samer.strugar@t-com.me

Phone :+382 30 317350



1. Mainmeasures taken by government(max. 2 lines of explanation for each measure)

- CONFINEMENT :
- NON ESSENTIAL BUSINESS' CLOSURE :
- BORDERS' CLOSURE :
- OTHERS :
- NONE:

2. Port's situation(max. 10 lines)

Prohibition of entry for all cruisers and yachts into ports: Bar, Budva, Kotor, Kumbor- Portonovi, Tivat (gat I and Gat II), and Zelenika, until 15th April 2020.

3. Inland transports' situation(max. 10 lines)

Prohibition of entry for foreigners with permanent or temporary residence in Montenegro and foreigners who perate motor vehicles used for traffic of goods; Traffic of goods for the needs of Montenegro and for transit remains smooth with special measures of healthy and sanitary control. Closure of border crossing for passenger border traffic.

4. Airports' situation(max 5 lines)

Ban on commercial air traffic from Montenegro as well as restrictions from other countries for travel is prolonged until 22nd April 2020, including that date.

5. Any import cargo treatment/decontamination (max 5 lines)

- NO
- YES

6. Possibilities of surveys

- NO
- YES

7. Specific information(max 5 lines)



Comité des Assureurs Maritimes et Transports

8, rue d'Artois – 75008 PARIS (France)

Tél. : (33.1) 58 56 96 00

Email : info@cesam.org

www.cesam.org

COVID-19 Overview

Date : 25 March 2020

Place/COUNTRY : Rotterdam / The Netherlands

Name : Interloyd Averij / Bert van Riessen

Email : bert.vanriessen@interloyd.nl

Phone : +31 10 244 3900 / +31 6 53268609

1. Main measures taken by government (max. 2 lines of explanation for each measure)

- CONFINEMENT** : No but restrictions are in place to avoid group situations, to keep distance of 1.5 meters, to meet a max of 3 persons in one room, except for residents of the same residence, etc.
- NON ESSENTIAL BUSINESS' CLOSURE** :Yes, but mainly related to business with close client contact, such as hairdressers. Transport industry is still considered as essential business. Surveyors are still allowed to carry out surveys on board of vessels, in the ports, at logistic premises etc. But they should act with care, keep distance, etc.
- BORDERS' CLOSURE** :The border with Belgium is only open for trucks/freight in order to keep the industry running. The border with Germany is still open for all traffic.
- OTHERS** :
- NONE** :

2. Port's situation (max. 10 lines)

The ports are still open. Surveyors are still allowed to carry out surveys on board of vessels, in the ports, at logistic premises etc. but they have to follow the prescribed, general precautions (refrain from survey when having minor health problems, keep distance, washing hands, no handshakes, etc).

3. Inland transports' situation (max. 10 lines)

No restrictions. Surveys can still be carried out, see above under Port's situation.

4. Airports' situation (max 5 lines)

No restrictions when it concerns freight/cargo deliveries. Surveys can still be carried out, see above under Port's situation.

5. Any import cargo treatment/decontamination (max 5 lines)

- NO
- YES

6. Possibilities of surveys

- NO
- YES

7. Specific information (max 5 lines)

Our office is minimally staffed but strongly supported by the remaining staff who can successfully work remotely (safe and secure).



Comité des Assureurs Maritimes et Transports

8, rue d'Artois – 75008 PARIS (France)

Tél. : (33.1) 58 56 96 00

Email : info@cesam.org

www.cesam.org

COVID-19 Overview

Date : 23.04.2020

Place/COUNTRY : Norway

Name : Wesmans

Email : info@wesmans.com

Phone : +4740004388



1. Main measures taken by government (max. 2 lines of explanation for each measure)

- CONFINEMENT :
- NON ESSENTIAL BUSINESS' CLOSURE :
- BORDERS' CLOSURE :
- OTHERS :
- NONE :

2. Port's situation (max. 10 lines)

Open except for passenger business

3. Inland transports' situation (max. 10 lines)

No issues

4. Airports' situation (max 5 lines)

Open, although very limited flights

5. Any import cargo treatment/decontamination (max 5 lines)

- NO
- YES

6. Possibilities of surveys

- NO
- YES

7. Specific information (max 5 lines)

Surveys are generally carried out without implications although some warehouses are taking extra precautions and may prohibit physical survey. Some counties and municipality have more stringent rules for travel domestically, which may delay survey.



Comité des Assureurs Maritimes et Transports

8, rue d'Artois – 75008 PARIS (France)

Tél. : (33.1) 58 56 96 00

Email : info@cesam.org

www.cesam.org

COVID-19 Overview

Date : 11.05.2020

Place/COUNTRY : Poland

Name : Independent Claims Surveyors Polska Sp. z o.o., Artur Walas

Email : office@ics.com.pl

Phone : +48 61 662 6935



1. Main measures taken by government (max. 2 lines of explanation for each measure)

- CONFINEMENT** : 2 meters – minimum distance between pedestrians. Obligation to cover mouth and nose in public spaces. 14-days (in-house) quarantine restriction applies to those who: return from abroad, had contact with persons infected (or potentially infected) with coronavirus, From May 4, 2020 quarantine does not apply to those who: cross the border in order to work or study in the territory of a neighboring country or in Poland
- NON ESSENTIAL BUSINESS' CLOSURE** :Restaurants, cafés and bars can only provide takeout and delivery services (not possible to serve meals or drinks). Cultural institutions remain closed including museums, art galleries, concert halls, opera houses, cinemas, movie clubs, libraries, archives. The following indoors facilities remain closed notice: gyms, swimming pools, fitness and dance clubs. Outdoors sports facilities and hotels are opened starting with May 04, 2020 (keeping in mind all safety / precaution epidemic rules)
- BORDERS' CLOSURE** :The borders of country can be crossed only by: Polish citizens, foreigners who are spouses or children of Polish citizens or are under the care of Polish citizens, people who hold the Pole's Card, diplomats, persons with a permanent or temporary residence in Poland or a work permit, foreigners who operate a means of transport used for the transportation of goods. Cargo transport operates as usual..
- OTHERS** : Schools and universities closed. Only home-schooling until May, 24 2020

2. Port's situation (max. 10 lines)

Ports are working in more or less normal way, surveys are still available however with all precaution measures as recommended by government.

3. Inland transports' situation (max. 10 lines)

Restriction applies to: public transport. On the bus, tram or subway, only half of the seats can be occupied. It is best when every other seat is left empty. If there are 70 seats in the vehicle, it can take up to 35 people. In the car with more than 9 seats, up to half of the seats can be occupied. This does not apply to passenger cars.

4. Airports' situation (max 5 lines)

Limitation applies to all domestic and international passenger flights. Valid to: May 9, 2020 (with possibility of extension)
Only cargo and special organized flights are allowed.

5. Any import cargo treatment/decontamination (max 5 lines)

- NO

6. Possibilities of surveys

- YES

7. Specific information (max 5 lines)

There are limitations in access to the warehouses as result of internal restrictions of management based on government indications as results of which some surveys are postponed. In workplaces employers have to provide additional security measures to their employees: employees must use gloves or have access to liquid disinfectants, individual persons must be at least 1.5 meters from each other. In practice majority of companies are working remotely (home-officing).

COVID-19 Overview

Date :01/04/2020

Place/COUNTRY : Lisbon / PORTUGAL

Name :PEDRO CORDEIRO, LDA.

Email :info@pedrocordeirolda.pt

Phone :+3513211260



1. Main measures taken by government (max. 2 lines of explanation for each measure)

- CONFINEMENT** : State of Emergency as declared by the Portuguese government on March 18th 2020. Since that date circulation is forbidden expect for: going to work, health care and essential goods shopping.
- NON ESSENTIAL BUSINESS' CLOSURE** :Only the following services are allowed to be opened: Supermarkets, food stores (take away), banks, pharmacies and newsstands
- BORDERS' CLOSURE** :Borders only opened for goods transportation. Non-residents are not allowed to enter.
- OTHERS** :
- NONE**:

2. Port's situation (max. 10 lines)

Ports opened but working with restrictive measures. Important loss of activity already noted, mainly in Lisbon port, where a stevedores strike is in course.

3. Inland transports' situation (max. 10 lines)

Inland transportation working as usual, but mainly directed to the essential goods, since almost all industry and all the shopping centers are closed.

4. Airports' situation (max 5 lines)

Airports working for freight / cargo but with restrictive measures for the employees. Travel allowed with flight reduction, only between Portugal mainland and islands Azores and Madeira, but only for reasons that can not be postponed.

5. Any import cargo treatment/decontamination (max 5 lines)

- NO
- YES

6. Possibilities of surveys

- NO
- YES

7. Specific information (max 5 lines)



Comité des Assureurs Maritimes et Transports

8, rue d'Artois – 75008 PARIS (France)

Tél. : (33.1) 58 56 96 00

Email : info@cesam.org

www.cesam.org

COVID-19 Overview

Date : 30.04.2020

Place/COUNTRY : Romania

Name : Kalimbassieris Maritime SARL

Email : constantza@kalimbassieris.com

Phone : (+40) 241 693750



1. Main measures taken by government (max. 2 lines of explanation for each measure)

- CONFINEMENT** : Strict restrictions on general public movements
- NON ESSENTIAL BUSINESS' CLOSURE** :
- BORDERS' CLOSURE** : Foreign citizens arriving from Italy, China, Iran and South Korea, regardless of the means of transportation used, will be allowed into Romania only if they enter quarantine or isolation.
- OTHERS** :
- NONE** :

2. Port's situation (max. 10 lines)

Romanian ports and terminals continue to be operational in strict observance of governmental orders. Cargo operations and repairs are allowed on the basis of minimal contact and obligatory PPE with detailed requirements on the type of PPE to be used, guidelines on disposal etc. Attendances on board by third parties are allowed subject to usage of proper PPE.

3. Inland transports' situation (max. 10 lines)

Strict restrictions on public movements.

4. Airports' situation (max 5 lines)

Limited flight service available.

5. Any import cargo treatment/decontamination (max 5 lines)

- NO** – No decontamination/specific cargo treatment for imports as far as we are aware of.
- YES**

6. Possibilities of surveys

- NO**
- YES**

7. Specific information (max 5 lines)

Crew changes are not forbidden and framework to monitor and minimize risks established. The logistical possibilities for crew changes though are very limited.



Comité des Assureurs Maritimes et Transports

8, rue d'Artois – 75008 PARIS (France)

Tél. : (33.1) 58 56 96 00

Email : info@cesam.org

www.cesam.org

COVID-19 Overview

Date : 1st April 2020

Place/COUNTRY : Koper (Slovenia)

Name : Samer & Co. Shipping Ltd. D.o.o. - Koper

Email : claims.koper@samer.com; matteo.slocovich@samer.com

Phone : +386 40 305131



1. Main measures taken by government (max. 2 lines of explanation for each measure)

- CONFINEMENT** : prohibition of : 1) movement and gathering of people in public places ; b) access to public places and areas ; c) movement outside the municipality of residence except some strict exceptions
- NON ESSENTIAL BUSINESS' CLOSURE** :all non-essential activities are closed
- BORDERS' CLOSURE** :
- OTHERS** :
- NONE** :

2. Port's situation (max. 10 lines)

Port is fully operational

3. Inland transports' situation (max. 10 lines)

No particular restrictions. Inland transport is allowed subject to the respect of COVID-19 safety regulations

4. Airports' situation (max 5 lines)

Airports completely closed

5. Any import cargo treatment/decontamination (max 5 lines)

- NO**
- YES**

6. Possibilities of surveys

- NO**
- YES**

7. Specific information (max 5 lines)

COVID-19 Overview

Date : 04/05/20

Place/COUNTRY : Cádiz, SPAIN

Name : Carlos López

Email : info@macphersoncadiz.com

Phone : 0034 956 80 80 23



1. Main measures taken by government (max. 2 lines of explanation for each measure)

- CONFINEMENT** : Free movement is limited.
- NON ESSENTIAL BUSINESS' CLOSURE** : Non-essential business are closed to the public.
- BORDERS' CLOSURE** : Border are closed for non-residents. Free movement of goods still applies and working as usual.
- OTHERS** : see #7

2. Port's situation (max. 10 lines)

Ports are working as usual, taking the appropriate measures to avoid infection as much as possible

3. Inland transports' situation (max. 10 lines)

Inland transport is working as usual, although the priority is in the movement of essential goods.

4. Airports' situation (max 5 lines)

Travel is not allowed except for reasons that cannot be postponed. From 0.00 hours on March 23, the access of travelers through the external borders of Spain is restricted.

5. Any import cargo treatment/decontamination (max 5 lines)

- NO**
- YES**

6. Possibilities of surveys

- NO**
- YES** Our office is running with usual bussines and working both at home and in the office (one person per day)

7. Specific information (max 5 lines)

The Spanish government declared the State of Alarm on 14th March. Since then, a quarantine of 30 (15 + 15) days has been implemented on the spanish territory. All open to public bussines/sites are closed and free movement of people is limited. Free movement of cargo is unaltered, even though there is priority in essential goods. Link to the Law: <https://www.boe.es/buscar/doc.php?id=BOE-A-2020-3692>

Update as of 04/05/20:

The Spanish government has put in place a deconfinement plan based on "stages" and taking into account the irregular situation of the different provinces in Spain. The plan goes through four stages: stage 0, stage I, stage II and stage III. These consecutive stages ease the confinement measures in any given province depending on whether they meet certain criteria. Any province can go back and forth to the different stages if the situation changes.

Stage 0 (from 4th May / all Spain): opening of small businesses with scheduled appointments (e.g. hairdresser's, bookshops).

Stage I (From 11th May / provinces meeting the criteria): partial opening of businesses with outside areas and limiting occupation to 50% (e.g. restaurants with a terrace)

Stage II (From 25th May / provinces meeting the criteria): opening of businesses but limiting occupation, ensuring distance between clients. (e.g. cinemas)

Stage III (From 8th June / provinces meeting the criteria): General mobility more flexible and opening of businesses, whilst following the safety protocols and recommendations. (distancing, masks, etc.)



Comité des Assureurs Maritimes et Transports

8, rue d'Artois – 75008 PARIS (France)

Tél. : (33.1) 58 56 96 00

Email : info@cesam.org

www.cesam.org

COVID-19 Overview

Date : 30.03.2020

Place/COUNTRY : Switzerland

Name : Incase AG

Email : florian.faber@incase-survey.com

Phone : +41 61 631 28 28



1. Main measures taken by government (max. 2 lines of explanation for each measure)

- CONFINEMENT** : Meetings in public limited to 5 persons / 2 m safety distance
- NON ESSENTIAL BUSINESS' CLOSURE** : Mainly related to businesses with close client contact in shops like hairdressers & florists. Surveys are not affected.
- BORDERS' CLOSURE** : Borders open for business travel, private travel if not necessary is restricted.
- OTHERS** :
- NONE** :

2. Port's situation (max. 10 lines)

Port of Basle is not affected by closures. Terminals are open, shifts are reduced to a minimum to protect labour from infections. Surveys are allowed.

3. Inland transports' situation (max. 10 lines)

No restrictions from the government. Single companies may restrict access to their workshops.

4. Airports' situation (max 5 lines)

No restrictions concerning cargo.

5. Any import cargo treatment/decontamination (max 5 lines)

- NO**
- YES**

6. Possibilities of surveys

- NO**
- YES**

7. Specific information (max 5 lines)

Office is open



Comité des Assureurs Maritimes et Transports

8, rue d'Artois – 75008 PARIS (France)

Tél. : (33.1) 58 56 96 00

Email : info@cesam.org

www.cesam.org

COVID-19 Overview

Date : 07.04.2020

Place/COUNTRY : Odesa / Ukraine

Name : Viktor PROKHOROV

Email : viktor.prokhorov@marinex.odessa.ua

Phone : +380503164124



1. Main measures taken by government (max. 2 lines of explanation for each measure)

- CONFINEMENT** : The government established an emergency situation with quarantine and citizens movement restriction up to 24 April 2020
- NON ESSENTIAL BUSINESS' CLOSURE** : It was recommended to use distance working whenever possible; all restaurants, coffees and bars are closed or work in take away regime
- BORDERS' CLOSURE** : In general, the border is closed; some border crossing points are used for automobile entrance
- OTHERS** :
- NONE** :

2. Port's situation (max. 10 lines)

The Ukrainian ports are working in usual regime. Each vessel's crew is a subject to sanitary-epidemiological control prior to giving "free practice"

3. Inland transports' situation (max. 10 lines)

All passenger inner transport is prohibited

4. Airports' situation (max 5 lines)

All airports are closed for domestic and international flights

5. Any import cargo treatment/decontamination (max 5 lines)

- NO
- YES

6. Possibilities of surveys

- NO
- YES

7. Specific information (max 5 lines)

COVID-19 Overview

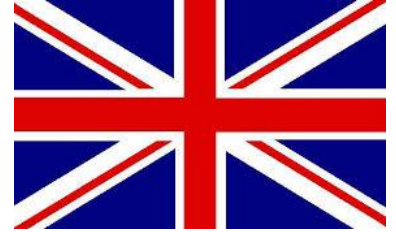
Date : 26.03.20

Place/COUNTRY : UNITED KINGDOM

Name : ISA

Email : info@isa-surveys.com

Phone : +44 (0)20 8302 4911



1. Main measures taken by government (max. 2 lines of explanation for each measure)

- CONFINEMENT** : Stay at home apart from essential travel. Only go outside for food, health reasons or work (only if you cannot work from home)
- NON ESSENTIAL BUSINESS' CLOSURE** : All retail with notable exceptions inc food shops, medical services / pharmacies, petrol stations etc. / Assembly & Leisure facilities closed.
- BORDERS' CLOSURE** :
- OTHERS** : Self-isolation for 7 days (if you live alone), 14 days living within a family in the event that you show symptoms of Covid-19
- NONE** :

2. Port's situation (max. 10 lines)

Operating normally, however within government guidelines regarding social distancing etc. Possible minimal staff numbers due to people self-isolating.

3. Inland transports' situation (max. 10 lines)

Operating normally, however within government guidelines regarding social distancing etc. Many warehouses have set own restrictions regarding access by outside parties etc. Possible minimal staff numbers due to people self-isolating.

4. Airports' situation (max 5 lines)

Cargo side operating normally, however within government guidelines regarding social distancing etc. Possible minimal staff numbers due to people self-isolating.

5. Any import cargo treatment/decontamination (max 5 lines)

- NO
- YES

6. Possibilities of surveys

- NO
- YES

7. Specific information (max 5 lines)

We are finding that warehouses / ports are beginning to limit entry to their own employees only and therefore in these instances, survey will not be possible. In the event of non-time sensitive goods, surveys are being delayed otherwise desk top investigations are being considered.

AFRICA





Comité des Assureurs Maritimes et Transports

8, rue d'Artois – 75008 PARIS (France)

Tél. : (33.1) 58 56 96 00

Email : info@cesam.org

www.cesam.org

COVID-19 Overview

Date : 28/03/2020

Place/COUNTRY : Mostaganem/ Algeria

Name : Sid Ahmed Daouadji

Email : sidsurvey67@gmail.com/ daouadji.expertise@gmail.com

Phone : +213550684943/ +21345404557



1. Main measures taken by government (max. 2 lines of explanation for each measure)

- CONFINEMENT : In progress until further notice.
- NON ESSENTIAL BUSINESS' CLOSURE :Some business are closed (coffee, restaurant....)
- BORDERS' CLOSURE :Not yet.
- OTHERS : Projects construction slows down.
- NONE :

2. Port's situation (max. 10 lines)

Ports in activity from 07:00 am to 07:00 pm

3. Inland transports' situation (max. 10 lines)

Transportation in progress from 07:00 am to 07:00 pm

4. Airports' situation (max 5 lines)

Repatriation of nationals in progress but no arrival of foreigners.

5. Any import cargo treatment/decontamination (max 5 lines)

- NO
- YES Crew and cargo are inspected in harbour before entering the port.

6. Possibilities of surveys

- NO
- YES

7. Specific information (max 5 lines)

Some ports suffered with absence of sanitary masks and gloves.

Offloading operation 01 hold/ shift per vessel in some Ports.

COVID-19 Overview

Date : 28 Avril 2020

Place/COUNTRY : Douala / Cameroun

Name : Lucien EBOKO MOUKOKO

Email : lucien.eboko@gem-lem.com

Phone : +237 699 86 85 71



1. Main measures taken by government (max. 2 lines of explanation for each measure)

- CONFINEMENT** : Partiel, mais recommandé pour tous, sorties limitées
- NON ESSENTIAL BUSINESS' CLOSURE** : Tous les commerces non essentiels ne sont pas fermés, mais sont davantage réglementés au niveau des accès, des regroupements ou des effectifs. Fermeture obligatoire de tous les débits de boissons et restaurants à partir de 18 heures LT.
- BORDERS' CLOSURE** : la fermeture des frontières est de mise depuis le 27 mars, mais avec quelques exceptions pour l'entrée des navires transportant des biens de 1ère nécessité et l'acheminement de ceux-ci dans les pays voisins de l'Hinterland, pour les avions cargos en ce qui concerne les produits pharmaceutiques.
- OTHERS** : Port de masque fortement recommandé, et formellement exigé dans la plupart des espaces administratifs et commerciaux, dans les accès en zone portuaire et dans tous les espaces publics

2. Port's situation (max. 10 lines)

Arraisonnement de tout navire, pendant 14 jours, à la bouée de base;
Envoi du personnel de santé portuaire à la bouée de base pour test COVID aux équipages des navires;
Montée à bord des navires sous autorisation exclusive des services de santé du port;
Priorité d'entrée aux navires transportant les produits de première nécessité;
Réduction du nombre de conférences portuaires en une seule par jour;
Port obligatoire des équipements de prévention au COVID par tous les opérateurs portuaires;
Désinfection des mains dans tous les points d'entrée des ports.

3. Inland transports' situation (max. 10 lines)

Maintien de la liaison du transport des marchandises du port de Douala vers les pays de l'hinterland

4. Airports' situation (max 5 lines)

Entrées et sorties suspendues dans les aéroports du Cameroun, en International, sauf dérogation spéciale.

5. Any import cargo treatment/decontamination (max 5 lines)

NO

6. Possibilities of surveys

YES

7. Specific information (max 5 lines)

Fermeture obligatoire des snacks, bars et restaurants à partir de 18 heures LT, et interdiction de boire sur place dans les débits de boissons en journée;
Interdiction formelle de tous regroupements supérieurs à 50 personnes ;
Fermeture de tous les établissements scolaires et divers centres de formations;
Privilège donné au télétravail ou au travail à temps partiel dans la plupart des administrations et des sociétés;
Promotion des recherches en médecine traditionnelle dans la lutte contre le COVID 19;



Comité des Assureurs Maritimes et Transports

8, rue d'Artois – 75008 PARIS (France)

Tél. : (33.1) 58 56 96 00

Email : info@cesam.org

www.cesam.org

COVID-19 Overview

Date : 24.03.2020

Place/COUNTRY : Alexandria - Egypt

Name : Michel GHOBRIEL

Email : michelg@wormsalx.com

Phone : 00201223199158



1. Main measures taken by government (max. 2 lines of explanation for each measure)

- CONFINEMENT** : Pour ceux qui sont infectés dans des hôpitaux spécifiés
- NON ESSENTIAL BUSINESS' CLOSURE** : obligation commençant aujourd'hui durant le couvre-feu de 19:00 heure jusqu'à 06:00 du matin.
- BORDERS' CLOSURE** : les aéroports sont fermés et des strictes mesures prises pour la navigation
- OTHERS** :
- NONE** :

2. Port's situation (max. 10 lines)

La plupart des navires sont gardés dans les zones d'ancrage extérieures comme quarantaine pour une période de 14 jours, en cas de doute d'avoir quelqu'un infecté. Si non le navire entre dans le port.

3. Inland transports' situation (max. 10 lines)

Situation normale avant le couvre-feu.

4. Airports' situation (max 5 lines)

Fermés complètement en Egypte depuis le Jeudi passé.

5. Any import cargo treatment/decontamination (max 5 lines)

- NO**
- YES** toutes les marchandises importées sont désinfectées avant les formalités de dédouanement surtout celles qui sont dans les conteneurs.

6. Possibilities of surveys

- NO**
- YES**

7. Specific information (max 5 lines)



Comité des Assureurs Maritimes et Transports

8, rue d'Artois – 75008 PARIS (France)

Tél. : (33.1) 58 56 96 00

Email : info@cesam.org

www.cesam.org

COVID-19 Overview

Date : 29/04/2020

Place/COUNTRY : GABON

Name : COMISAV

Email : libreville@comisav.com

Phone : 0024111704728/ 0024174366077



1. Main measures taken by government (max. 2 lines of explanation for each measure)

- CONFINEMENT** : Total for pupils and students. A rotation system has been put in place in public and private administrations for workers.
- NON ESSENTIAL BUSINESS' CLOSURE** : Only food vendors work.
- BORDERS' CLOSURE** : To avoid the spread and contamination of the disease inside and outside the country.
- OTHERS** : Curfew from 6:00 p.m. to 6 a.m.
- NONE** :

2. Port's situation (max. 10 lines)

In the case of the ports of Gabon, activity remains unchanged, it continues in all the ports of Gabon.

3. Inland transports' situation (max. 10 lines)

The internal transport for goods / food is the same. This is not the case for people.

4. Airports' situation (max 5 lines)

Airports are only open for the transportation of cargo. Passenger transportation in airlines is suspended until further notice except in exceptional cases.

5. Any import cargo treatment/decontamination (max 5 lines)

- NO
- YES

6. Possibilities of surveys

- NO
- YES

7. Specific information (max 5 lines)

After two weeks of total confinement, we have the possibility of circulating until 6 p.m. It is recommended to respect the barrier measures and to wear bibs in public spaces and to respect the minimum distance.

COVID-19 Overview

Date : 9 April 2020

Place/COUNTRY : NAIROBI/KENYA

Name : ALFRED MUNIALO

Email : alfred.munialo@mclarens.co.ke

Phone : +254721118705



1. Main measures taken by government (max. 2 lines of explanation for each measure)

- CONFINEMENT** : Movement in and out of the counties of Nairobi, Mombasa, Kilifi and Kwale has been suspended for the next 21 days from 6 April in Nairobi and 8 of April in the other 3 counties.2 curfew has been imposed from 7.p.m to 5a.m throughout the country
- NON ESSENTIAL BUSINESS' CLOSURE** : Bars, golf courses have been closed while restaurant are only allowed to sell take away ,
- BORDERS' CLOSURE** : Borders have been closed for passengers, however movement of transit good is allowed
- OTHERS** :
- NONE** :

2. Port's situation (max. 10 lines)

Port's operations are continuing

3. Inland transports' situation (max. 10 lines)

Transportation of goods is continuing

4. Airports' situation (max 5 lines)

Airports are open for cargo flights only.

5. Any import cargo treatment/decontamination (max 5 lines)

- NO
- YES

6. Possibilities of surveys

- NO
- YES

7. Specific information (max 5 lines)

Passenger rail services between Nairobi and Mombasa have been suspended. However transportation of cargo from the port of Mombasa to the inland depot in Nairobi is continuing



Comité des Assureurs Maritimes et Transports

8, rue d'Artois – 75008 PARIS (France)

Tél. : (33.1) 58 56 96 00

Email : info@cesam.org

www.cesam.org

MD /

COVID-19 Overview

Date : 24 Mars 2020

Place/COUNTRY : Abidjan/Cote d'ivoire

Name : Christian FASSINOU

Email : direction@cemgroupe.com

Phone : +22548917028



1. Main measures taken by government (max. 2 lines of explanation for each measure)

- CONFINEMENT :
- NON ESSENTIAL BUSINESS' CLOSURE :
- BORDERS' CLOSURE :
- OTHERS : Night curfew, restricted movement from one side of the country to the other
- NONE :

2. Port's situation (max. 10 lines)

Open for cargo traffic only, with health screening while vessel is on port roads

3. Inland transports' situation (max. 10 lines)

Cargo only (no passenger traffic) allowed to circulate inland, but with obviously more frequent controls and screenings, and therefore longer delays

4. Airports' situation (max 5 lines)

Airport closed, except for special/exceptional humanitarian corridor flights

5. Any import cargo treatment/decontamination (max 5 lines)

- NO
- YES

6. Possibilities of surveys

- NO
- YES

7. Specific information (max 5 lines)

Situation is very volatile and rules can change under short notice



Comité des Assureurs Maritimes et Transports

8, rue d'Artois – 75008 PARIS (France)

Tél. : (33.1) 58 56 96 00

Email : info@cesam.org

www.cesam.org

COVID-19 Overview

Date : 07 April 2020

Place/COUNTRY : MADAGASCAR

Name : RAZAFINDRAFAHATRA Zoé

Email : cemmtmv@moov.mg

Phone : +261 34 01 241 99



1. Main measures taken by government (max. 2 lines of explanation for each measure)

- CONFINEMENT : extended for 15 days from Sunday 05 April 2020
- NON ESSENTIAL BUSINESS' CLOSURE :
- BORDERS' CLOSURE :
- OTHERS :
- NONE :

2. Port's situation (max. 10 lines)

Ports are working

3. Inland transports' situation (max. 10 lines)

Vehicles for cargoes transport are allowed in the day time.

4. Airports' situation (max 5 lines)

Open for cargoes

5. Any import cargo treatment/decontamination (max 5 lines)

- NO
- YES by disinfection

6. Possibilities of surveys

- NO
- YES

7. Specific information (max 5 lines)

82 persons contaminated:

- 51 persons from abroad where 02 persons recovered
- 31 persons contaminated by contact



Comité des Assureurs Maritimes et Transports

8, rue d'Artois – 75008 PARIS (France)

Tél. : (33.1) 58 56 96 00

Email : info@cesam.org

www.cesam.org

COVID-19 Overview

Date : 31 03 2020

Place/COUNTRY : MALI

Name : OUATTARA MODIBO

Email : m.ouattara@orangemali.net / gmex@orangemali.net

Phone : 00223 66 75 15 49 / 00223 20 28 30 70



1. Main measures taken by government (max. 2 lines of explanation for each measure)

- CONFINEMENT** : partiel car le couvre-feu est instauré sur toute l'étendue du territoire de 21H à 05H du matin
- NON ESSENTIAL BUSINESS' CLOSURE** : fermeture obligatoires des bars, restaurants, salles de spectacles, établissements publics et privées avec les médersas, etc...
- BORDERS' CLOSURE** : toutes les frontières terrestres fluviales et aériennes sont fermées aux passagers depuis le 18/03/2020 exceptées les avions cargos et les camions /conteneurs transportant les diverses marchandises
- OTHERS** : tous regroupement supérieur à 50 personnes sont interdits (mariages, décès, baptêmes et autres regroupements à caractères sociaux
- NONE** :

2. Port's situation (max. 10 lines)

3. Inland transports' situation (max. 10 lines)

4. Airports' situation (max 5 lines)

Seuls les avions cargo sont autorisés à atterrir

5. Any import cargo treatment/decontamination (max 5 lines)

- NO
- YES

6. Possibilities of surveys

- NO
- YES

7. Specific information (max 5 lines)



Comité des Assureurs Maritimes et Transports

8, rue d'Artois – 75008 PARIS (France)

Tél. : (33.1) 58 56 96 00

Email : info@cesam.org

www.cesam.org

COVID-19 Overview

Date : 28 Avril 2020

Place/COUNTRY : MOROCCO

Name : MEDITERRANEAN CONSULTING SERVICES

Email : omarbourhabi@gmail.com

Phone : +212661173059



1. Main measures taken by government (max. 2 lines of explanation for each measure)

- CONFINEMENT** : les autorités publiques ont décidé la prolongation de l'état d'urgence sanitaire jusqu'au 20 mai 2020. Pendant le mois de Ramadan, les autorités ont imposé une interdiction totale de circuler entre 19h00 PM et 05h00 AM sauf pour un certain nombre d'activités de nuit.
- NON ESSENTIAL BUSINESS' CLOSURE** :
- BORDERS' CLOSURE** :
- OTHERS** :
- NONE** :

2. Port's situation (max. 10 lines)

Les ports marocains poursuivent leurs activités dans le respect absolu des mesures sanitaires imposées par les autorités compétentes.

Dans les ports de commerce gérés par l'ANP, hors Tanger Med, la communauté portuaire continue à offrir ses services aux acteurs du commerce international. Au 31 mars 2020, le mouvement des échanges a fait ressortir une augmentation de 7,3% par rapport à la même période de l'année 2019, et une hausse de 1,4% de l'activité des conteneurs.

Le marasme économique à l'échelle mondiale et l'état d'urgence sanitaire au Maroc n'ont pas affecté l'activité d'import-export de marchandises au niveau de Tanger Med qui continue à recevoir camions et conteneurs contenant des marchandises à destination et en provenance de l'extérieur.

3. Inland transports' situation (max. 10 lines)

4. Airports' situation (max 5 lines)

Le transport de passage est toujours suspendu mais le fret pour les produits de première nécessité est toujours assuré.

5. Any import cargo treatment/decontamination (max 5 lines)

- NO
- YES

6. Possibilities of surveys

- NO
- YES

7. Specific information (max 5 lines)

L'industrie marocaine fabrique des masques et des appareils de respiration en quantité suffisante pour sauver des vies humaines.

COVID-19 Overview

Date : 30.04.2020

Place/COUNTRY : MAURITANIA

Name : CEM NOUAKCHOTT

Email : cemnkt@yahoo.fr / cmeesnkt@yahoo.fr

Phone : 45254800 / 44220802



1. Main measures taken by government (max. 2 lines of explanation for each measure)

- CONFINEMENT : Recommended / very strict curfew from 1800 to 0600
- NON ESSENTIAL BUSINESS' CLOSURE : All commercial business closed except agricultural and food shops
- BORDERS' CLOSURE : Yes
- OTHERS : Schools and Universities closed until new order
- NONE :

2. Port's situation (max. 10 lines)

Ports are normally operating and not concerned with curfew. Ship's calls are managed as per attached new regulations

3. Inland transports' situation (max. 10 lines)

No displacement between towns/cities since 29.03.2020 except food carriage/transport

4. Airports' situation (max 5 lines)

Totally closed

5. Any import cargo treatment/decontamination (max 5 lines)

- NO
- YES

6. Possibilities of surveys

- NO
- YES

7. Specific information (max 5 lines)

18.04.2020 : Mauritania declared free of positive cases of COVID-19 since 18.04.2020 but on 29.04.2020, a new positive case discovered for a stowaway entry from Senegal 3 days ago.

République Islamique de Mauritanie
Honneur – Fraternité – Justice

Ministère de l'Équipement
et des Transports

PORT AUTONOME DE NOUAKCHOTT
DIT "PORT DE L'AMITIE"

Tél: 45 25 16 76 – 45 25 14 53 – 45 25 17 94
Fax: 45 25 16 15 – TELEX: 5538 MTN – BP: 5103
Nouakchott – Mauritanie

N 0007/020 PAN-PA



الجمهورية الإسلامية الموريتانية
شرف – إخاء – عدل

وزارة التجهيز والنقل

ميناء نواكشوط المستقل
المعروف بميناء الصداقة

هاتف: 45 25 16 76 / 45 25 14 53 / 45 25 17 94
فاكس: 45 25 16 15 / تلکس: 5538 / ب. پ: 5103
نواكشوط – موريتانيا

رقم: م. م. ن. م. ص /

Nouakchott, le 23 AVR 2020

CIRCULAIRE

Objet : Mesures de protection contre la prolifération du COVID-19

Vu la stratégie adoptée par le gouvernement Mauritanien portant sur des mesures de prévention contre la prolifération du COVID-19 ;

Vu la vitesse de l'augmentation du nombre des pays affectés ;

Vu les besoins de la Mauritanie en ravitaillement en carburant, en produits de première nécessité et autres produits à usage courant ;

L'Autorité portuaire de Nouakchott décide ce qui suit :



1. Seul le Département de Protection des Frontières de la Direction Régionale de la Santé peut décider si un navire sera accepté ou non au Port de Nouakchott selon l'état de santé des membres de l'équipage et de l'historique du voyage du navire.
2. Afin de protéger au maximum le peuple mauritanien, les navires en provenance des pays affectés doivent :
 - (i) Être mis en quarantaine dans la mesure du possible afin de permettre au Département de la Direction Régionale de la Santé de statuer sur l'état sanitaire des membres de l'équipage des navires désirant faire escale au Port de Nouakchott.
 - (ii) Respecter strictement l'envoi au préalable par mail à l'Autorité portuaire des informations médicales concernant la santé des membres de l'équipage, l'historique du voyage du navire et des autres personnes embarquées qui permettront au Département de protection de frontière de la Direction Régionale de la Santé de faire des analyses des risques de contamination.

3. C'est le médecin équipé d'équipements de protection individuelle adéquats qui monte en premier pour des contrôles et évaluation physique des membres de l'équipage. Si aucune suspicion n'est constatée, il autorise le Pilote d'embarquer pour conduire le navire à son Poste.
4. Le pilote doit être obligatoirement équipé d'équipements de protection individuelle (Masque, gants et lunettes de sécurité). La distance de 2 mètres ou plus doit être tout le temps respectée durant les manœuvres.
5. Une fois le navire à quai, limiter dans la mesure du possible le contact avec les membres de l'équipage et respecter strictement la distance minimum de 2 mètres.
6. Le Médecin et le pilote sont tous les deux responsables de la neutralisation ou destruction de leurs équipements de protection individuelle (EPI) usés.
7. A l'approche de la montée à bord du Médecin de frontière et du Pilote, tous les membres de l'équipage du navire doivent être consignés dans leur cabine et ne sont autorisés à sortir dans les coursives qu'avec du masque et gants propres. Le personnel du bord en charge d'accueillir et d'escorter le médecin ou le pilote doit être bien équipé d'équipement de protection individuelle adéquat et se maintenir à une distance de 2 mètres ou plus par rapport au Médecin ou, au Pilote du port.
8. Les membres de l'équipage sont confinés à l'intérieur de la Superstructure durant toute l'escale du navire.
9. Seuls les membres de l'équipage impliqués dans une mission de surveillance de sûreté et des opérations du navire après être équipés des masques, gants et lunette seront autorisés à sortir du château. La distance de sécurité de 2 mètres doit être respectée dans la mesure du possible.
10. Les membres de l'équipage sont interdits de descendre à quai à l'exception du Second Capitaine pour la lecture des tirants d'eau (sécurité).
11. Les experts ne sont pas autorisés à entrer dans le château du navire. Les inspections conjointes avec le bord se font avec des équipements de protection individuelle appropriés (masque, lunettes et gants) uniquement sur le pont ouvert. Les documents seront échangés par mail.
12. Aucun Personnel terre n'est autorisé à entrer en contact avec les membres de l'équipage du navire et à accéder à la superstructure du navire où est confiné l'équipage.
13. L'officier de port, les services administratifs de l'état (Douanes, Gendarmerie, Police), l'Agent Consignataire ne sont plus autorisés de monter à bord.
14. Aucun document ou objet physique n'est autorisé de sortir du navire. Tous les échanges de documents avec le bord se font par mail. Les discussions se font par téléphones ou par radio.

15. Des documents ou objets physiques peuvent être remis à bord par un colis déposé le long du bord ou à la coupée loin de présence du personnel du Bord qui récupèrera le colis plus tard après le départ de l'agent consignataire.
16. Aucun poste de contrôle des visiteurs du bord n'est autorisé près de la coupée pour éviter tout attroupement. L'enregistrement des personnels de la manutention travaillant à bord s'effectue dans un office à terre assuré par l'agent sureté de l'installation portuaire.
17. Le Bord doit limiter le nombre de son personnel impliqué dans les manœuvres et dans la surveillance des opérations du navire. Le port d'équipement de protection individuelle adéquat (Masque neuf, gants neufs, lunettes) est obligatoire pour tout personnel opérant en dehors du château du navire.
18. Une Poubelle spéciale à couvercle fermé est placée près du navire pour recevoir les masques et gants usagés. Les contenus des poubelles seront incinérés immédiatement.
19. Le débarquement de toute sorte d'objets et des déchets est interdit.
20. Les dockers, Grutiers et autres agents impliqués dans les opérations du bord :
 - (i) doivent être sensibilisés et instruits sur le COVID-19, au préalable avant d'être affectés à des travaux de bord.
 - (ii) Doivent éviter de s'approcher du château du navire. Ils doivent rejoindre leur poste de travail éloignés du personnel du Bord, qui à leur tour doit respecter la distance de 2 mètres au minimum.
 - (iii) Éviter les discussions et la distance rapprochée inutile avec le personnel du bord même si ce dernier est bien protégé.
 - (iv) Éviter de toucher la bouche, le nez, le visage avec les mains. Appliquer le code de bonne hygiène avant, durant et à la fin du shift. A la fin du shift emballer soigneusement les vêtements de travail dans un sachet d'emballage. Se laver bien les mains avec du savon avant de rentrer à la maison.
21. Les lamaneurs impliqués dans les manœuvres du navire doivent :
 - (i) être sensibilisés et instruits sur le COVID-19. Dans l'exercice de leur fonction.
 - (ii) être équipés des gants pour manipuler les toulines, aussières et autres accessoires provenant du navire.
 - (iii) Appliquer le code de bonne hygiène à tout moment. Éviter de toucher la bouche, le nez et le visage. A la fin du service, emballer les vêtements de travail dans un sac en plastique. Se laver bien les mains avec du savon et mettre des vêtements propres avant d'entrer dans le dortoir ou de rentrer à la maison.
22. L'Autorité portuaire et les sociétés de manutention, assureront chacune leur responsabilité dans l'approvisionnement en EPI à leur personnel respectif.

23. A la fin de l'escale du navire, un PV sur la gestion de la prévention contre l'introduction du COVID-19 doit être établi par le terminal qui soumettra à l'Autorité portuaire et qui à son tour après visa soumettra à la Direction Régionale de la Santé Publique.
24. Toute infraction aux présentes dispositions sera statuée dans un PV et entraînera l'arrêt des opérations en cours. Une enquête sera ouverte afin d'engager une poursuite judiciaire.
25. La brigade maritime de Gendarmerie et le Commissariat spécial de Police assureront, suivant leur organisation, la surveillance du respect des présentes dispositions avec la Capitainerie du port et le gestionnaire du terminal concerné.
26. L'Autorité portuaire se réserve le droit de modifier les dispositions prises selon l'évolution de la Pandémie COVID-19.

Le Directeur Général
Sid'Ahmed RAISS





Comité des Assureurs Maritimes et Transports

8, rue d'Artois – 75008 PARIS (France)

Tél. : (33.1) 58 56 96 00

Email : info@cesam.org

www.cesam.org

COVID-19 Overview

Date : 25th March 2020.

Place/COUNTRY : NIGERIA

Name : SYLVESTER OBADIN

Email : mail@westafrica-inspections.com

Phone : : +234 805 540 9808



1. Main measures taken by government (max. 2 lines of explanation for each measure)

- CONFINEMENT : }
 - NON ESSENTIAL BUSINESS' CLOSURE : }
 - BORDERS' CLOSURE } All in line with WORLD HEALTH ORGANISATION (WHO) guidelines.
- Restrictions easing from Monday 4th May
- OTHERS :
 - NONE :

2. Port's situation (max. 10 lines)

Operating as we speak even though access for service providers is skeletal in view of state/govt partial "lockdown" challenges.

Ports working if slow and attending to vessels available but terminals now congested because of lack of regular clearing of cargo and containers following C19:movement restrictions.

3. Inland transports' situation (max. 10 lines)

Ok, but with various states' partial lockdown directives proving difficult to harmonise and comprehend all at once as with nuisances specific to localities.

4. Airports' situation (max 5 lines)

Closed.

5. Any import cargo treatment/decontamination (max 5 lines)

- NO
- YES

6. Possibilities of surveys

- NO
- YES

7. Specific information (max 5 lines)

We suggest Local press and online platforms specific to country for guidance as information on latest situations is fluid and changing rapidly.



Comité des Assureurs Maritimes et Transports

8, rue d'Artois – 75008 PARIS (France)

Tél. : (33.1) 58 56 96 00

Email : info@cesam.org

www.cesam.org

COVID-19 Overview

Date : March 25th 2020

Place/COUNTRY : SENEGAL

Name : Babacar Sy NDIAYE

Email : cems@orange.sn / b.sy.ndiaye@orange.sn

Phone : +221 77 638 85 91 / +221338233573



1. Main measures taken by government (max. 2 lines of explanation for each measure)

- CONFINEMENT :
- NON ESSENTIAL BUSINESS' CLOSURE :
- BORDERS' CLOSURE :
- OTHERS : State of emergency /curfew
- NONE :

2. Port's situation (max. 10 lines)

Every ship that arrives has to wait outside of the port; then is checked by customs, immigration and sanitary services. Every member of the crew is temperature checked by the sanitary services to detect any fever, if a single member has a fever, the ship cannot get in the port.

Cruises are banned from the port.

3. Inland transports' situation (max. 10 lines)

The intercity traffics is prohibited besides for merchandises.

4. Airports' situation (max 5 lines)

The airport is shut down until April 17th besides for cargos, freight, sanitary evacuations, and touristic repatriations.

5. Any import cargo treatment/decontamination (max 5 lines)

- NO
- YES

6. Possibilities of surveys

- NO
- YES

7. Specific information (max 5 lines)

There is a high chance of a National confinement happening in the next few days.



Comité des Assureurs Maritimes et Transports

8, rue d'Artois – 75008 PARIS (France)

Tél. : (33.1) 58 56 96 00

Email : info@cesam.org

www.cesam.org

COVID-19 Overview

Date : 15 April 2020

Place/COUNTRY : South Africa

Name : Nathan Christians and Andrew Heathcote

Email : Nathan@rmurray.co.za and AndrewH@renniemurray.co.za

Phone : +27 718997368 and +27 834485625



1. Main measures taken by government (max. 2 lines of explanation for each measure)

- CONFINEMENT** : As of 21 March 2020 South Africa has been on a national Lockdown. Only essential workers are allowed to leave their homes or general public to obtain provisions and for medical reasons.
- NON ESSENTIAL BUSINESS' CLOSURE** : All non-essential business to be closed for the duration of the lockdown.
- BORDERS' CLOSURE** : No cross boarder movement of persons or crew changes are permitted. Borders only open to South African citizens returning to the country and foreign citizens leaving to return to their homes.
- OTHERS** :
- NONE** :

2. Port's situation (max. 10 lines)

Ports remain operational at a restricted rate as so to maintain the flow of essential goods ,however, no crew changes are permitted.

Some car carriers have been working as operational restrictions have eased slightly. Cargo congestion slightly eased but the situation remains difficult. No cruise ships unless cleared by government and then only for bunkers, supplies and to disembark South African citizens. Limited marine services due to sekeleton staff. Off port limits anchorages currently have a large volume of vessels waiting to be allowed to berth.

3. Inland transports' situation (max. 10 lines)

Only transporters moving essential items will be allowed to operate. General public will be allowed to go the local shops and obtain medical assistance when needed. Exports to foreign countries by road allowed.

4. Airports' situation (max 5 lines)

Although the import of cargo has not been entirely stopped same has been limited to essential items. Several Airlines have stopped the flow of cargo with clearing agents experiencing delay in deliveries.

5. Any import cargo treatment/decontamination (max 5 lines)

- NO
- YES

6. Possibilities of surveys

- NO
- YES

7. Specific information (max 5 lines)

Only companies and staff with valid permits issued by the "Companies and Intellectual Property Commission" are allowed to conduct surveys and carry out essential services.

Government has extended the lockdown period which was to end on 16 March 2020 to now 30April 2020.



Comité des Assureurs Maritimes et Transports

8, rue d'Artois – 75008 PARIS (France)

Tél. : (33.1) 58 56 96 00

Email : info@cesam.org

www.cesam.org

COVID-19 Overview

Date : 30 Mars 2020

Place/COUNTRY : Ndjamena / Tchad

Name : ETOUMANN BEYOKI Serge

Email : serge.etoumann@comisav.com

Phone : +235 62 55 87 97



1. Main measures taken by government (max. 2 lines of explanation for each measure)

CONFINEMENT : Partiel, recommandé pour tous

NON ESSENTIAL BUSINESS' CLOSURE : Les commerces non essentiels sont fermés, les bars snacks et restaurants sont fermés, le transport interurbain suspendu mais celui urbain est davantage réglementé.

BORDERS' CLOSURE : Le 18 Mars 2020 le chef de l'Etat tchadien, Idriss Déby, s'est entretenu, mercredi, au téléphone, avec son homologue camerounais, Paul Biya sur la fermeture des frontières terrestres qui touche directement le Tchad. Dans le cadre de la lutte contre le coronavirus. Cette décision touche directement le Tchad dont le gros des marchandises transite par ce pays. Selon la présidence tchadienne « Les marchandises en direction du Tchad entreront librement ».

OTHERS : Les regroupements supérieurs à 50 personnes sont officiellement interdits

NONE :

2. Port's situation (max. 10 lines)

Port sec de Nguéli, priorité d'entrer des conteneurs des produits de première nécessité.

Port obligatoire des équipements de prévention et désinfection des mains dans le seul point d'entrée du port.

3. Inland transports' situation (max. 10 lines)

La liaison de transport des marchandises du port sec de Nguéli vers Douala vice versa est maintenue

4. Airports' situation (max 5 lines)

Suspension de tous les vols commerciaux

5. Any import cargo treatment/decontamination (max 5 lines)

NO

YES

6. Possibilities of surveys

NO

YES

7. Specific information (max 5 lines)

COVID-19 Overview

Date : 13th May, 2020

Place/COUNTRY : Tanzania

Name : Toplis and Harding (T) Ltd

Email : claims@toplisnadharding.com

Phone : +255 22 2114559



1. Main measures taken by government (max. 2 lines of explanation for each measure)

- CONFINEMENT** : Not imposed
- NON ESSENTIAL BUSINESS' CLOSURE** : Schools, universities and other learning institutions were closed from 18th March for one month. This was then extended indefinitely. Restaurants have been asked to close about 10 days back
- BORDERS' CLOSURE** : Airport is closed as international flights are grounded. Port is open as usual. Kenya and Zambia borders were closed this week by the respective countries after many infected truck drivers had entered
- OTHERS** : The government is not imposing a lock down as this would affect the people who rely on a daily income. Cases have gone up but the government has stopped announcing data since 28th April, 2020
- NONE** :

2. Port's situation (max. 10 lines)

Port is open as usual

3. Inland transports' situation (max. 10 lines)

Operating as usual. However, Kenya and Zambia have closed the borders this week.

4. Airports' situation (max 5 lines)

All international flights are not operating. Cargo flights are still operating. Internal flights are operating as normal

5. Any import cargo treatment/decontamination (max 5 lines)

- NO**
- YES**

6. Possibilities of surveys

- NO**
- YES**

7. Specific information (max 5 lines)



Comité des Assureurs Maritimes et Transports

8, rue d'Artois – 75008 PARIS (France)

Tél. : (33.1) 58 56 96 00

Email : info@cesam.org

www.cesam.org

COVID-19 Overview

Date : 29/04/2020

Place/COUNTRY : Tunisia

Name : BRAHAM Nabil

Email : survey.dept@socotu.com.tn

Phone : 21 393 789



1. Main measures taken by government (max. 2 lines of explanation for each measure)

- CONFINEMENT** : extended up to 03/05/2020
- NON ESSENTIAL BUSINESS' CLOSURE** :The closure of all non-essential business open to public except transport industry which is considered as essential business, food stores, pharmacies and hospitals.
- BORDERS' CLOSURE** :with Algeria and Libya starting from 19/03/2020
- OTHERS** : restriction to travel internally from place to place and town to town and every movement or travel needs justification or authorisation from the concerned authorities
- NONE** :

2. Port's situation (max. 10 lines)

The port is operating smoothly only for very restricted cargo importation such as food, medical equipment, flammable products.

3. Inland transports' situation (max. 10 lines)

Only for cargo transportation.

4. Airports' situation (max 5 lines)

All traffic was suspended except for few people repatriation.

5. Any import cargo treatment/decontamination (max 5 lines)

- NO**
- YES** Sanitary controls and fumigation adopted.

6. Possibilities of surveys

- NO**
- YES**

7. Specific information (max 5 lines)

Most of Surveys are delayed after confinement.

ASIA



COVID-19 Overview

Date : 25 April, 2020

Place/COUNTRY : People's Republic of Bangladesh

Name : JF (Bangladesh) Limited

Email : loydsagency@jfbdltd.com, survey@jfbdltd.com,

Phone : +88 31 716321. +88 0171 4003151



1. Main measures taken by government (max. 2 lines of explanation for each measure)

CONFINEMENT : Yes, Government has further extended country wide closure, until 05.05.2020, as such, Ministry of Health, and law and enforcing authorities, have been repeatedly asking people, through electronic and print media not to come out from home, BUT TO STAY AT HOME, In addition, various places in the capital, including other parts of the country, have been kept under lock down to contain spread of Covid -19 and will remain in place till further notice. Emergency services, including medical services and supply of agricultural goods and food, will not fall under the purview of the lockdown. The government is setting up quarantine centres in Dhaka and some other districts around the capital for those who will be repatriated from different countries, mainly from the Middle East.

NON ESSENTIAL BUSINESS' CLOSURE : All private and government offices are closed from 26.03.2020 until 05.05.2020.

BORDERS' CLOSURE :

OTHERS : All educational institutions, both private & government, have been closed from 26.03.2020 until 05.05.2020, however many schools and universities have migrated to online classes.

2. Port's situation (max. 10 lines)

Chittagong port is functioning, since Government have declared all shipping related activities as essential services, as such, loading, unloading and cargo deliveries are taking place, in limited manner. In view of the limited delivery of cargo from the containers, the imported products is creating congestion in different Yards of Chittagong Port, as reported, although the arrival of the vessel at the port as well as loading & unloading of goods are going on.

3. Inland transports' situation (max. 10 lines)

All types of public Transport, viz, by sea, land, rail, road have been totally stopped from 26.03.2020 until 05.05.2020. However, transports related to ambulance, police, army, other law enforcing authorities including fire brigades and other essential services are exempted from such restricted movements.

4. Airports' situation (max 5 lines)

Civil Aviation Authority of Bangladesh have suspended all domestic and international flights, however arrangements have been kept ready to handle skeleton flight, on emergency basis, if needed, as reported.

5. Any import cargo treatment/decontamination (max 5 lines)

NO

YES

6. Possibilities of surveys

NO

YES

7. Specific information (max 5 lines)

Bangladesh Army are patrolling in the streets assisting local administration at divisional cities and district towns from March 26, in ensuring social distancing and implementing other precautionary measures.

COVID-19 Overview

Date : 13th May 2020

Place/COUNTRY : Hong Kong SAR, China

Name : Intertek Testing Services HK Ltd. – Cynthia Lam

Email : info.paulsen@intertek.com

Phone : +852-2197 1666



1. Main measures taken by government (max. 2 lines of explanation for each measure)

- CONFINEMENT** : Restrictions are in place to avoid group situations to be extended with max. headcounts per table served up to 8 heads (previously 4 only) until 21st May 2020. 14 days compulsory quarantine for new entry home town citizens. Situation remains unchanged.
- NON ESSENTIAL BUSINESS' CLOSURE** : Most of the affected business lines/ public leisure facilities resume to work. Karaoke provide dinning service only without singing and Party Room service still suspended. No live performance, such as bands/ singers allowed in any restaurant/ dinning place.
- BORDERS' CLOSURE** : Entry for home town citizens only.
- OTHERS** : Civil servant return to their workplace in normal mode. Students of various levels will be returned to school starting from 27th May 2020 and on later days respectively, except kindergarten/ nursery kids. They will return to learning in next semester.

2. Port's situation (max. 10 lines)

Ports are operative for cargoes.

3. Inland transports' situation (max. 10 lines)

Normal for cargo in and out.

4. Airports' situation (max 5 lines)

Normal for cargo in and out. Entry for home town citizens only, 14 days compulsory quarantine required.

5. Any import cargo treatment/decontamination (max 5 lines)

- NO
- YES

6. Possibilities of surveys

- NO
- YES

7. Specific information (max 5 lines)



Comité des Assureurs Maritimes et Transports

8, rue d'Artois – 75008 PARIS (France)

Tél. : (33.1) 58 56 96 00

Email : info@cesam.org

www.cesam.org

COVID-19 Overview

Date : 13th May 2020

Place/COUNTRY : Beijing/Tianjin/Qingdao/Dalian/Guangzhou – P.R.China

Name : HUATAI SURVEYORS & ADJUSTERS COMPANY

Email : controlgroup@huatai-serv.com

Phone : +86-10-5653 3269 / +86-10-5653 6535 ext.8302



1. Main measures taken by government (max. 2 lines of explanation for each measure)

CONFINEMENT :

NON ESSENTIAL BUSINESS' CLOSURE :

BORDERS' CLOSURE : Foreign nationals holding visas or residence permits are not allowed to entry into China. **

OTHERS : Compulsory isolation for 14 days at the entry port if anyone entered into China.

NONE :

2. Port's situation (max. 10 lines)

Operating normally.

3. Inland transports' situation (max. 10 lines)

Operating normally.

4. Airports' situation (max 5 lines)

Back to normal, but quantity of fights are still limited.

5. Any import cargo treatment/decontamination (max 5 lines)

NO

YES

6. Possibilities of surveys

NO

YES

7. Specific information (max 5 lines)

**In view of the rapid spread of COVID-19 across the world, China has decided to temporarily suspend the entry into China by foreign nationals holding visas or residence permits still valid to the time of this announcement, effective from 28 March.



Comité des Assureurs Maritimes et Transports

8, rue d'Artois – 75008 PARIS (France)

Tél. : (33.1) 58 56 96 00

Email : info@cesam.org

www.cesam.org

COVID-19 Overview

Date : 24 March 2020

Place/COUNTRY : Shanghai/China

Name : Zhao Min / AqualisBraemar Shanghai Co., Ltd.

Email : min.zhao@aqualisbraemar.com

Phone : 0086-18964639318



1. Main measures taken by government (max. 2 lines of explanation for each measure)

- CONFINEMENT :
- NON ESSENTIAL BUSINESS' CLOSURE :
- BORDERS' CLOSURE :
- OTHERS : Health Barcode Check, Temperature check
- NONE :

2. Port's situation (max. 10 lines)

In normal situation, but slowly.

3. Inland transports' situation (max. 10 lines)

In normal condition now.

4. Airports' situation (max 5 lines)

Back to normal condition now.

5. Any import cargo treatment/decontamination (max 5 lines)

- NO
- YES

6. Possibilities of surveys

- NO
- YES

7. Specific information (max 5 lines)



Comité des Assureurs Maritimes et Transports

8, rue d'Artois – 75008 PARIS (France)

Tél. : (33.1) 58 56 96 00

Email : info@cesam.org

www.cesam.org

COVID-19 Overview

Date :13th May 2020

Place/COUNTRY : Mumbai, INDIA

Name :Bharat Thakker

Email :gis@globalinsurance.co.in; bbthakker@gmail.com

Phone :+ 91 22 98331 36288



1. Main measures taken by government(max. 2 lines of explanation for each measure)

CONFINEMENT : Lockdown was imposed by the Government of India on 25th March 2020 until 14th April 2020 but looking at the gravity of the outbreak, the Government extended it until 3rd May 2020. In between, the lockdown was relaxed from 20th April onwards to gear up business and industry and this relaxation resulted in mixed response and the period of the lockdown was further extended from 4th May up to 17th May 2020. The Government is now contemplating upon extending it beyond 17th May; particularly in red zones, in a subdued form by relaxing it during the day time and tightening it at night.

NON ESSENTIAL BUSINESS' CLOSURE : Non-essential goods are still not allowed to move with the exception of raw material and intermediaries required in manufacturing units of drugs, pharmaceuticals and medical devices. This is applicable to all the 3 zones- red (worst affected), orange (less affected) and green (least affected).

BORDERS' CLOSURE : In the 3rd phase of the lockdown starting from 4th May 2020, the government allowed industrial activities including movement of non-essential goods in rural areas across state and district borders in green zones with certain strict protective conditions of social distancing. Airports remained closed except for air cargo and evacuation flights and ports were operating under force majeure that limits its freedom but the indication from government officials is that flights will resume with 25-30 per cent capacity mid-May onwards.

OTHERS : In all the 3 zones interstate borders were closed with restrictions imposed on movement of goods / people. However, in green zones some relaxation has been given in this regard with strict condition of complying with necessary protocols of self-protection and social distancing.

2. Port's situation(max. 10 lines)

Ports working under force majeure, now encounter severe storage problem. Logistics experts and container operators say storage containers at ports are almost full with many of them containing perishable and essential commodities. Operators are still trying to cope with the backlog of orders that were not delivered due to lockdown protocols. They have to spend Rs 13000 to 15000 (equivalent to 200 Euro to 300 Euro approx.) per container and additionally they have to spend double on the wages of the labourers and drivers who have stayed back. Furthermore, their lodging and boarding arrangements are also to be made by operators. Shortage of porters and drivers have caused container freight stations to remain 98 per cent full. These containers are stocked with chemicals needed to manufacture medicines, unrefined cooking oil, fruit, plastic paper and the like. Forty per cent of them are essential commodities. Many of them have short shelf life. Importers say they are unable to pay for their orders and with factories shut, they are not keen on taking their goods anyway.

3. Inland transports' situation(max. 10 lines)

Many truck drivers and their crew members returned to their home states when the nationwide lockdown was first imposed on 25th March 2020. The relaxation in the lockdown from 20th April followed by the lockdown's third phase starting from 4th May 2020 has eased transport of all goods in green zones allowing even non-essential goods to be transported under strict protocols of self-protection and social distancing. However, only 15 to 20 per cent of over 9 million trucks of the country were back on the road, the reasons being hurdles in accessing e-passes needed to travel across districts and states accompanied by absence of truck drivers and lack of labour to load goods at factories and warehouses.

The relaxation in the lockdown provided by the government has yet to prove its benefits.

4. Airports' situation(max 5 lines)

Flight operations remained suspended till 3rd May 2020 in spite of the relaxation in the lockdown starting from 20th April. There are indications from reliable sources that domestic flights to certain select destinations have started from 4th May 2020 while international flights will start from 1st June 2020. Thus it is expected that Indian airports will resume with 25-30 per cent capacity mid-May onwards.

5. Any import cargo treatment/decontamination (max 5 lines)

NO

6. Possibilities of surveys

NO

7. Specific information(max 5 lines)

Decontamination measures and surveys have started even before 3rd May 2020 with some difficulties due to lockdown restrictions. The following website <https://www.mohfw.gov.in/> continues to be an excellent source of information for all COVID 19 related issues / developments including travel restrictions in India.



Comité des Assureurs Maritimes et Transports

8, rue d'Artois – 75008 PARIS (France)

Tél. : (33.1) 58 56 96 00

Email : info@cesam.org

www.cesam.org

COVID-19 Overview

Date : 7 April 2020

Place/COUNTRY : Japan

Name : Cornes & Co., Ltd.

Email : survey.yokohama@cornes.jp

Phone : +81-45-201-8537



1. Main measures taken by government (max. 2 lines of explanation for each measure)

- CONFINEMENT** : Government declared a 'State of Emergency' on 6 April 2020 for Tokyo, Yokohama, Chiba, Saitama, Osaka, Kobe and Fukuoka and will continue until at least 6 May 2020
- NON ESSENTIAL BUSINESS' CLOSURE** : Government requests to avoid outings
- BORDERS' CLOSURE**
- OTHERS** :
- NONE** :

2. Port's situation (max. 10 lines)

Operating normally

3. Inland transports' situation (max. 10 lines)

Operating normally

4. Airports' situation (max 5 lines)

Open, but significant number of flights (both international and domestic) are cancelled

5. Any import cargo treatment/decontamination (max 5 lines)

- NO**
- YES**

6. Possibilities of surveys

- NO**
- YES**

7. Specific information (max 5 lines)

Basic infrastructure such as supermarkets, drugstores, bank and public transportation will not be impacted by the declaration. But under the state of emergency, there are no penalties against refusals and not lock down the cities like in Europe and the USA.



Comité des Assureurs Maritimes et Transports

8, rue d'Artois – 75008 PARIS (France)

Tél. : (33.1) 58 56 96 00

Email : info@cesam.org

www.cesam.org

COVID-19 Overview

Date : 07/04/2020

Place/COUNTRY : Kazakhstan

Name : Artyom Ignatyev

Email : artyom.ignatyev@eurogal-surveys.com

Phone : Mob : +77017640515 ; + 7727 2744025



1. Main measures taken by government (max. 2 lines of explanation for each measure)

- CONFINEMENT** : Schools, universities are closed (online education). Numerous cities are closed for quarantine including main Almaty and Nursultan (former Astana).
- NON ESSENTIAL BUSINESS' CLOSURE** : All public places are closed i.e. restaurants, cafes, libraries and etc. Except foodstuff and pharmacies.
- BORDERS' CLOSURE** : Borders are closed for all passengers. Except cargo transportation.
- OTHERS** : People should be self-isolated and stay at home. Penalties for violation of quarantine regime.
- NONE** :

2. Port's situation (max. 10 lines)

It is prohibited to visit arrived vessels by any third persons except doctors wearing masks, glasses, gloves and shoe covers. Prohibited to the crew members get of the vessel. All documents can be passed only after disinfection and only in a special boxes. Master must report about health condition of the crew members in advance. Passengers movements are prohibited.

3. Inland transports' situation (max. 10 lines)

Restrictions of the passenger's transportation. Cargo transportation is allowed.

4. Airports' situation (max 5 lines)

Restrictions of the passenger's transportation. Cargo transportation is allowed.

5. Any import cargo treatment/decontamination (max 5 lines)

- NO
- YES

6. Possibilities of surveys

- NO
- YES

7. Specific information (max 5 lines)

Surveys are allowed in the places/cities where movements of the citizens are not restricted. Each particular case should be checked/treated separately.



Comité des Assureurs Maritimes et Transports

8, rue d'Artois – 75008 PARIS (France)

Tél. : (33.1) 58 56 96 00

Email : info@cesam.org

www.cesam.org

COVID-19 Overview

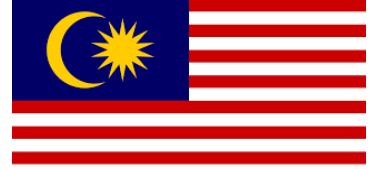
Date : May 15th 2020

Place/COUNTRY : Malaysia

Name : Rudi Kong Juan Sim

Email : rudisim@hwisa.com.my general@hwisa.com.my

Phone : +603 3167 6566



1. Main measures taken by government (max. 2 lines of explanation for each measure)

- CONFINEMENT** : Conditional Movement Control Order implemented as of 13th May 2020 (valid until 9th June 2020). Inter-state travel controlled. Limits on number of passengers in vehicles
- NON ESSENTIAL BUSINESS' CLOSURE** : Most businesses allowed to open subject to conditions. Close contact business still closed. Indoor sports/Group sports still disallowed
- BORDERS' CLOSURE** : Only essential flights. Singapore-Malaysian border still open but for essential travel only
- OTHERS** :
- NONE** :

2. Port's situation (max. 10 lines)

Basic COVID-19 checks being conducted at all entry points. Terminals are now back to full operations

3. Inland transports' situation (max. 10 lines)

All goods allowed to be transported subject to obtaining ministry approvals.

4. Airports' situation (max 5 lines)

Limited flights. Mostly Domestic only

5. Any import cargo treatment/decontamination (max 5 lines)

- NO
- YES

6. Possibilities of surveys

- NO
- YES

7. Specific information (max 5 lines)

Surveyors have obtained approval to perform full operations. Interstate travel is possible but still discouraged. We are currently able to deploy immediately in all Malaysian Major Ports except for Kota Kinabalu (24 hrs travel time required)

COVID-19 Overview

Date : May 11, 2020

Place/COUNTRY : Philippines

Name : Cursillito A. Quintanilla / Smith Bell Corporation

Email : cursillito.quintanilla@smithbell.com.ph

Phone : +63 2 908 882 3772



1. Main measures taken by government (max. 2 lines of explanation for each measure)

- CONFINEMENT** : The Enhanced Community Quarantine (ECQ) in NCR including Manila, Central Luzon (except Aurora), Calabarzon, Pangasinan, Benguet including Baguio City, Iloilo, Cebu, Cebu City and Davao City was extended until May 15, 2020. General Community Quarantine will be imposed on other areas after April 30, 2020.
- NON ESSENTIAL BUSINESS' CLOSURE** : All areas under ECQ, the non essential businesses are still closed and those under GCQ after April 30, 2020 work and transportation will be partially open.
- BORDERS' CLOSURE** : Checkpoints are still in place in every borders, only essential personnel and goods are allowed to enter/pass
- OTHERS** : Several parts in Visayas and Mindanao also extended their ECQ to May 15, 2020

2. Port's situation (max. 10 lines)

The Manila International Container Terminal (MICT), North Harbor Manila and Batangas International Port, Sta. Clara, Batangas as well as international ports in the Visayas and Mindanao are operational. Domestic ports are open for cargo movement but closed for passengers

3. Inland transports' situation (max. 10 lines)

Mass transports under ECQ are still not operational. Vehicles carrying essential goods and personnel are allowed provided they have an approved pass from Inter Agency Task Force (IATF). However, for those areas that were declared in General Quarantine, the mass transport were partially opened with physical distancing and mask to the passengers and workforce are being enforce.

4. Airports' situation (max 5 lines)

International flights at Ninoy Aquino Airport Terminal has resumed today (May 11, 2020) however, the is limited to accept to 400 passengers only until further notice.

5. Any import cargo treatment/decontamination (max 5 lines)

- NO

6. Possibilities of surveys

- YES

7. Specific information (max 5 lines)

The International Container Terminal Services, Inc. (ICTSI), arrastre contractor of Manila International Container Terminal (MICT), in a news briefing informed that the port is now operating normaly as the deliveries/withdrawal of the cleared container vans were ongoing.

The Batangas International Container Port, Batangas City and Subic International Container Terminal, Subic Bay Freeport Zone Auhtority, Olangapo, Zambales are open and operational.

The Cebu International Port, Cebu City in the Visayas region as well the Davao International Port, Panabo, Davao City and the Mindanao International Container Terminal, Tagoloan, Misamis Oriental are also open and operational.

COVID-19 Overview

Date : 13 May 2020

Place/COUNTRY : Korea Republic of

Name : Keun-Bae SONG

Email : seoul@hssna.co.kr

Phone : +82 2 752 2963



1. Main measures taken by government (max. 2 lines of explanation for each measure)

- CONFINEMENT** : No but government had raised national crisis alert level to highest and advising to keep distance while daily routine.
- NON ESSENTIAL BUSINESS' CLOSURE** : Government decided to lift the strict social distance scheme from 6 May and allow going back to daily routines while following the precautionary guidelines. Schools are re-opening starting from 20 May.
- BORDERS' CLOSURE** :
- OTHERS** : Effective from 1 April, all entrants from overseas will be subject to 14 day self-isolation at home or facilities and to the special entrance procedure (temperature check, submit travel record declaration, health questionnaire, and etc.).

2. Port's situation (max. 10 lines)

Port operations for cargo vessels are continuing.

3. Inland transports' situation (max. 10 lines)

Inland transport operations for cargo are continuing.

4. Airports' situation (max 5 lines)

Air cargo operations are continuing.

5. Any import cargo treatment/decontamination (max 5 lines)

- NO
- YES

6. Possibilities of surveys

- NO
- YES

7. Specific information (max 5 lines)

COVID-19 Overview

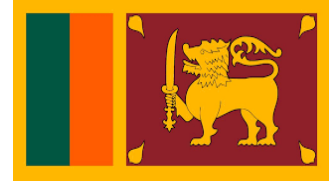
Date : 20th April 2020

Place/COUNTRY : SRI LANKA

Name : Aruna Seneviratne / AITKEN SPENCE

Email : aruna@aitkenspence.lk

Phone : +94.777.713.111



1. Main measures taken by government (max. 2 lines of explanation for each measure)

- CONFINEMENT** : Curfew in Colombo, Gampha, Kalutara, Puttalam districts will continue until 5 am on April 27 . Curfew in other districts will be lifted from 5 am to 8 pm daily until next Friday(24); Curfew from Friday(24) 8 pm will continue until 5 am on April (27). Travelling to and from the districts of Colombo, Gampaha, Kalutara and Puttalam is completely prohibited for every citizen.
- NON ESSENTIAL BUSINESS' CLOSURE** :Essential services are permitted to function. All other Offices have to work from home.
- BORDERS' CLOSURE** :No international flights to and from Sri Lanka is permitted.
- OTHERS** : The Government has suspended the Import of all non essential items other than Pharmaceuticals and Fuel.

2. Port's situation (max. 10 lines)

Port and Shipping are classified as essential services and continues to be functional.

Vessels are allowed to enter the Port on submission of a Health Declaration Form by the Master which should contain the health status of crew as well as the details of Ports visited within the last 14 days.

No delays in berthing and discharge/Loading of cargo.

Port was permitting the clearance of essential items without restriction and from 03rd of April (Friday) has allowed the clearance of all cargo. This has been in order to ease the congestion as well as to gear towards normalcy. However there are delays and obstacles to the smooth operations at this stage due to the following :

- Restrictions of movement due to curfew in force. Permits can be obtained for clearance of cargo but some workers may be faced with travel restrictions due to closure of public transport.
- Delays due to strict enforcement of social distancing. State has introduced on line approval for clearance of cargo, minimize contact.
- Limited availability of staff at Port and Customs.

Therefore as of now there is no restriction or suspension of clearance but delays due to practical reasons consequent to the preventive measures in place for the spread of COVID 19.

3. Inland transports' situation (max. 10 lines)

Transport is permitted on obtaining curfew permits. Generally limited to essential goods.

4. Airports' situation (max 5 lines)

No flights in to or out of the Country until further notice.

5. Any import cargo treatment/decontamination (max 5 lines)

- NO

6. Possibilities of surveys

- NO Sri Lanka Ports Authority has banned all surveyors from attending on board Vessels until further notice.

If and when requests for survey are received the following procedures are been adopted:

- Attempts are being/will be made to obtain curfew passes to attend to inspections. As surveys are not clearly classified as an essential service, the issuing of permits in this regard is not certain.
- When an inspection is not possible, Consignees would be instructed to take photographs, under the Surveyor's advice, and carry-out loss assessment and segregation of loss/damage , pending future inspection if required.
- Provide loss control advice to Consignee.



Comité des Assureurs Maritimes et Transports

8, rue d'Artois – 75008 PARIS (France)

Tél. : (33.1) 58 56 96 00

Email : info@cesam.org

www.cesam.org

COVID-19 Overview

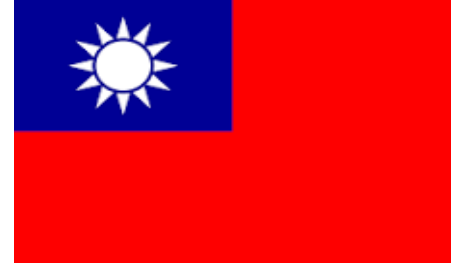
Date : 31st March, 2020

Place/COUNTRY : Taiwan

Name : Cosmos Marine Surveyors & Consultants Co., Ltd.

Email : cosmos@cosmosmarine.com.tw

Phone : office 886-2-23313993. m/p : 886-952571200



1. Main measures taken by government (max. 2 lines of explanation for each measure)

- CONFINEMENT : None
- NON ESSENTIAL BUSINESS' CLOSURE :None
- BORDERS' CLOSURE :None
- OTHERS : All foreign visitors request 14 days quarantine
- NONE :

2. Port's situation (max. 10 lines)

In normal

3. Inland transports' situation (max. 10 lines)

In normal

4. Airports' situation (max 5 lines)

In normal

5. Any import cargo treatment/decontamination (max 5 lines)

- NO
- YES

6. Possibilities of surveys

- NO
- YES

7. Specific information (max 5 lines)

Latest situation in Taiwan as follows :





Comité des Assureurs Maritimes et Transports

8, rue d'Artois – 75008 PARIS (France)

Tél. : (33.1) 58 56 96 00

Email : info@cesam.org

www.cesam.org

COVID-19 Overview

Date : 30th April 2020

Place/COUNTRY : Hochiminh City, Vietnam

Name : Trang-H-Long

Email : atlantis@viettel.vn

Phone : +84908281636



1. Main measures taken by government (max. 2 lines of explanation for each measure)

- CONFINEMENT** : Removed
- NON ESSENTIAL BUSINESS' CLOSURE** : Normal activity.
- BORDERS' CLOSURE** : Land borders with Cambodia and Laos closed. With China, reported except for goods. International airports terminals closed except for repatriation of foreigners who wished. Domestic flights allowed. International ports: see below
- OTHERS** : Facial mask mandatory to all
- NONE** :

2. Port's situation (max. 10 lines)

As per information received, international ports are operating. Our staff is still actively carrying out attendances trying to protect ourselves as much as possible and using safest way possible

3. Inland transports' situation (max. 10 lines)

As per information received domestic operations allowed to supply markets. Particularly for China, see above.

4. Airports' situation (max 5 lines)

See below

5. Any import cargo treatment/decontamination (max 5 lines)

- NO**
- YES** As usual and depending on specific cases and/or specific instructions of concerned Authorities. As per information received no general exceptional instructions given in addition to usual prudence and care.

6. Possibilities of surveys

- NO**
- YES**

7. Specific information (max 5 lines)

Non

CENTRAL AMERICA & SOUTH AMERICA





Comité des Assureurs Maritimes et Transports

8, rue d'Artois – 75008 PARIS (France)

Tél. : (33.1) 58 56 96 00

Email : info@cesam.org

www.cesam.org

COVID-19 Overview

Date : 12 May 2020

Place/COUNTRY : ARGENTINA

Name : Francisco Weil / Victoria Fontenla

Email : fweil@ascoliweil.com.ar/vfontenla@ascoliweil.com.ar

Phone : +5491144473258/+5491168640170



1. Main measures taken by government (max. 2 lines of explanation for each measure)

- CONFINEMENT** : Compulsory isolation & prohibition of circulation further extended until 24 May inclusive, mainly in Buenos Aires and the metropolitan area. Relaxation of quarantine in certain parts of the country. Return to work with restrictions.
- NON ESSENTIAL BUSINESS' CLOSURE** : Extended until 24 May inclusive. Some activities have been authorised in certain provinces subject to authorisation by local authority.
- BORDERS' CLOSURE** : Extension of prohibition to enter the country until 24 May inclusive with exceptions (sanitary purposes and repatriation of residents in the country that were abroad when the restriction was imposed).
- OTHERS** : Prohibition of dismissals and suspensions of employees for 60 days maintained. All restrictions maintained in the bigger and more crowded cities. Sale of commercial flights to, from and within Argentina prohibited until 1st September.

2. Port's situation (max. 10 lines)

Situation remains as informed in our previous reports. Maritime and import/export activities related to essential businesses are undertaken with difficulties. Further sanitary protocols have been implemented i.e. prohibition of crew changes and shore leaves involving foreign crewmembers; those showing symptoms of the disease will be disembarked to undergo sanitary protocols; pilots must avoid drinking or eating onboard; minimum contact with land personnel; contact between stowage personnel and crew prohibited; minimum contact with shipyard in case of repairs; etc. Customs may request to comply with certain formalities to allow the inclusion of certain medical supplies in the vessel's supply list with destination abroad.

3. Inland transports' situation (max. 10 lines)

Situation remains as informed in our previous reports. Activities related to essential businesses are undertaken with difficulties.

4. Airports' situation (max 5 lines)

Situation remains as informed in our previous report. Airport activities related to cargoes for essential businesses are proceeding normally to date however some difficulties cannot be ruled out. Suspension of passenger flights maintained. Flights for the repatriation of Argentine residents who were abroad are authorised on a limited scale. Likewise for certain interprovincial flights. Sale of commercial flights to, from and within Argentina prohibited until 1st September 2020.

5. Any import cargo treatment/decontamination (max 5 lines)

- YES** Situation remains as informed in our previous report. Sanitary controls and fumigation. Protocols to be followed.

6. Possibilities of surveys

- YES**

7. Specific information (max 5 lines)

Possibility of partially lifting restrictions of circulation will be evaluated by the Argentine Government towards the end of this 5th period of quarantine on or around 23th May on the basis of the recommendations of a panel of medical experts. Details on regulation affecting transport and protocols adopted by ports can be found at <https://www.argentina.gob.ar/puertos-vias-navegables-y-marina-mercante/protocolo-prevencion-covid-19-en-el-transporte-fluvial>.



Comité des Assureurs Maritimes et Transports

8, rue d'Artois – 75008 PARIS (France)

Tél. : (33.1) 58 56 96 00

Email : info@cesam.org

www.cesam.org

COVID-19 Overview

Date : 12-5-20

Place/COUNTRY : BOLIVIA

Name : ENRIQUEZ & LONG S.R.L.

Email : dlong entelnet.bo

Phone : (591) 715-24634 (Emergency Phone)



1. Main measures taken by government (max. 2 lines of explanation for each measure)

- CONFINEMENT** : Quarentine has been extended up to 30th May 2020
- NON ESSENTIAL BUSINESS' CLOSURE** :All commercial business are closed, excepting banks opening now from 07:00 to 14:00. Carry out restaurants are opening during authorized timetables.
- BORDERS' CLOSURE** :Borders closed to non emergency transit
- OTHERS** : People are still restricted to go out, except for essential purposes and according to the last number of ID cards

2. Port's situation (max. 10 lines)

Sea ports serving Bolivia (Peru, Chile, Paraguay) are operating normally dispatching emergency cargoes on authorized transit trucks.

3. Inland transports' situation (max. 10 lines)

Still restricted to non authorized trucks, buses etc. Humanitary people transportation is granted by official vehicles especially from international borders.

4. Airports' situation (max 5 lines)

Still closed, except for cargo planes with emergency cargoes. Foreign airplanes are authorized to land for humanitary people transportation (repatriation)

5. Any import cargo treatment/decontamination (max 5 lines)

- NO
- YES See point 4 always complying with anti contamination measures

6. Possibilities of surveys

- NO
- YES

7. Specific information (max 5 lines)

Surveys are possible under restriction measures and special authorizations request from sanitary authorities now 24 hours in advance.

COVID-19 Overview

Date : May 12, 2020

Place/COUNTRY : Santos, SP, Brazil

Name : Inspect Santos, Mr. Paulo de C. Machado

Email : inspect@inspect.com.br

Phone : +55 13 99711-6850



1. Main measures taken by government (max. 2 lines of explanation for each measure)

- CONFINEMENT** : The epidemic has been evolving in different ways in different regions of Brazil. For this reason, the Minister of Health, in a press conference this afternoon (May 6), stated that any lockdowns should be considered locally, and not nationally..
- NON ESSENTIAL BUSINESS' CLOSURE** : supermarket, fuel stations, drugstores, pet shops normal opening. The federal government expanded, by decree, the list of essential activities in the country - beauty salons, barber shops and gyms were included. Several State governments disagree with the measure and intend to keep these services inactive until the end of the social isolation measures.
- BORDERS' CLOSURE** :The country's land borders remain closed.
- OTHERS** : The governor extended the quarantine in the State of São Paulo until May 31. Projections made with a mathematical model developed at Unicamp (State University of Campinas) indicate that the adoption of mandatory lockdown in São Paulo will be inevitable if the level of social isolation does not rise significantly in the coming weeks, starting today.

2. Port's situation (max. 10 lines)

In order to set forth best practice on crew change in face of the pandemic, the National Health Surveillance Agency (Anvisa) published guidelines and necessary procedures for embarkation and disembarkation of crew members of vessels and platforms in Brazil.

The text compiles guidelines on screening crew members on a work schedule and preventive measures for embarkation and disembarkation of symptomatic and asymptomatic crew members. One of the essential measures is the screening of the crew, before the start of the work schedule, to identify possible cases of individuals with symptoms of Covid-19, in order to prevent the spread of the disease.

The guideline states that crew members must therefore comply with a 14-day quarantine at home or in a hotel before embarking on vessel/platform. In those 14 days they will have their health monitored and, if they show respiratory symptoms or fever, they should be prevented from boarding.

The disembarkation of foreign crewmembers in Brazil remains prohibited until the end of May, except in cases of direct repatriation or for medical assistance.

3. Inland transports' situation (max. 10 lines)

Some cities and states closing access roads, but federal government ordered cargo transportation must continue normally in order to not affect supply chain. International land borders closed.

4. Airports' situation (max 5 lines)

In order to meet the high demand for transporting tests performed in laboratories, due to the coronavirus pandemic, the National Civil Aviation Agency (ANAC) published Ordinance No. 880 / SPO, of 2020, which authorizes temporarily transporting Biological Substance, Category B (UN 3373), by all air taxi companies, governed by the Brazilian Civil Aviation Regulation No. 135. The measure is valid for 180 days.

5. Any import cargo treatment/decontamination (max 5 lines)

NO

6. Possibilities of surveys

NO

YES

7. Specific information (max 5 lines)

The number of confirmed cases in the country is 173.141, with 12.065 registered deaths and a fatality rate of 6.8%.

COVID-19 Overview

Date : 13.05.2020

Place/COUNTRY : Chile

Name : Organizacion Mueschen y Cia Ltda. (Mr. Clemens M. Best)

Email : ormus@mueschen.cl

Phone : +56226967784



1. Main measures taken by government (max. 2 lines of explanation for each measure)

CONFINEMENT : YES, curfew from 22-05 hours for the entire country (8th week).

Several cities or districts of cities are under sanitary confinement. People living inside these areas may only leave their homes for essential tasks, like walking the dog, buying in a supermarket or pharmacy. A special permit needs to be applied for at Police Stations or online. Police and Military are controlling people inside these confined areas. Outside these areas, normal activities can be realized, yet, movie theaters, shopping malls are closed and events with more than 50 people are forbidden, even private events like marriages or birthday celebrations. Schools, Universities, etc. remain closed.

AREAS OF CONFINEMENT:

Chile is applying a sort of "strategic confinement" for the country. Some cities or districts of cities are under confinement.

The province of Santiago and 6 surrounding districts will be placed under strict quarantine as of Friday 22:00 hours. Some districts had already been put under quarantine but this time approx. 8M people will have to stay home or almost 42% of Chile's entire population.

Additionally, cities and districts of Iquique & Alto Hospicio will be put under quarantine.

NON ESSENTIAL BUSINESS' CLOSURE : Inside confinement areas: YES. Outside: NO

BORDERS' CLOSURE : YES, only for persons, for cargo still open. Domestic flights are working normal.

2. Port's situation (max. 10 lines)

All ports remain open for cargo imports and exports. Cargo movements are down overall 8,23% in 1st Q. 2020, leading by Talcahuano Port (-21,1%). Valparaiso down (-12,64%), San Antonio (-6,8%).

3. Inland transports' situation (max. 10 lines)

All roads are open for transport, yet strict sanitary borders have been set in place around several cities like Valparaiso/Viña del Mar and San Antonio. National supply is working normal, no lack of food in supermarkets.

4. Airports' situation (max 5 lines)

Airports remain open for cargo transport and domestic passenger transport. Number of daily flights is down 90%

5. Any import cargo treatment/decontamination (max 5 lines)

NO Unknown, not that we know of.

6. Possibilities of surveys

YES - Only under special circumstances.

7. Specific information (max 5 lines)

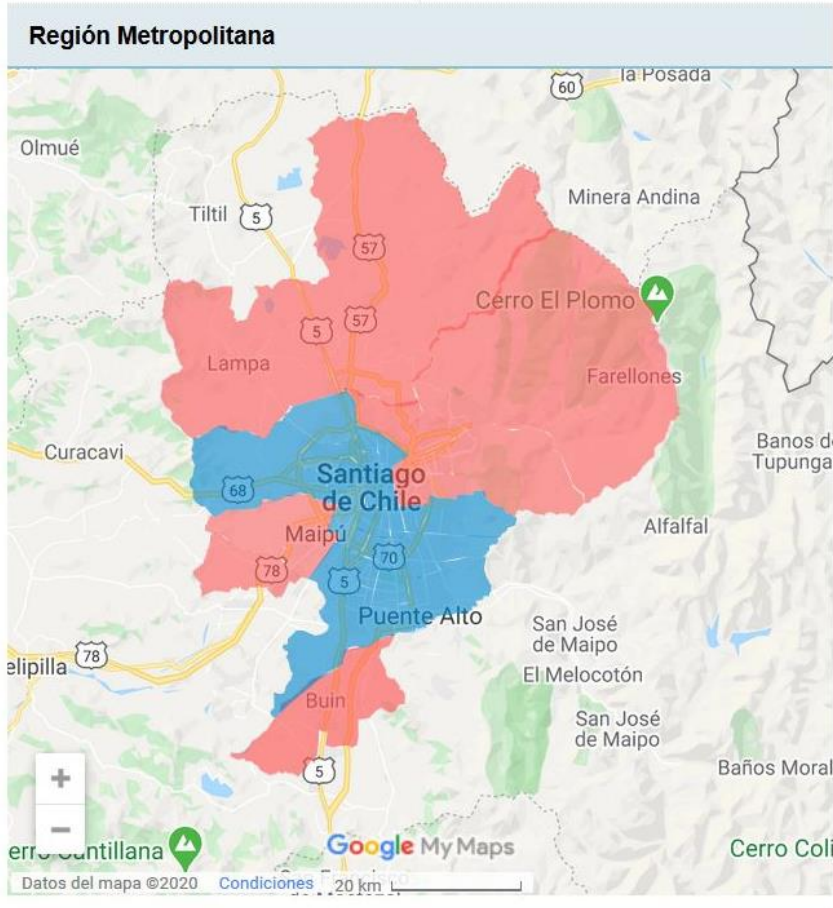
Actual Numbers:

TOTAL CASES: 34.381 - DEATHS: 346 - RECOVERED: 14.865 (43,2%) (Population: 18,7M)

Daily increase rose to a new record of 2660 new confirmed cases.

642 people in ICU care, 538 of them connected to mechanical ventilation and 118 of them in critical condition. The numbers are much higher than expected, reason why the Government applied new confinement rules.

Confinement Area of Metropolitan Area: Blue = already in force Red = as of May 15th.
■ Cuarentena vigente ■ Cuarentenas próximas a iniciar





Comité des Assureurs Maritimes et Transports

8, rue d'Artois – 75008 PARIS (France)

Tél. : (33.1) 58 56 96 00

Email : info@cesam.org

www.cesam.org

COVID-19 Overview

Date : March 30th, 2020

Place/COUNTRY : COLOMBIA

Name : MOLLER GROUP

Email : moller.bogota@mollergroup.net

Phone : +573173310501



1. Main measures taken by government (max. 2 lines of explanation for each measure)

- CONFINEMENT :
- NON ESSENTIAL BUSINESS' CLOSURE :
- BORDERS' CLOSURE :
- OTHERS :
- NONE :

2. Port's situation (max. 10 lines)

Port continue operating without novelty, documental and processual support is given to importers, specially of consumer goods.

3. Inland transports' situation (max. 10 lines)

Reduced but not restricted.

4. Airports' situation (max 5 lines)

Restricted. Only international travellers with a Colombian nationality. In-country flights are cancelled.

5. Any import cargo treatment/decontamination (max 5 lines)

- NO
- YES Decontamination as a preventive measure.

6. Possibilities of surveys

- NO
- YES

7. Specific information (max 5 lines)



Comité des Assureurs Maritimes et Transports

8, rue d'Artois – 75008 PARIS (France)

Tél. : (33.1) 58 56 96 00

Email : info@cesam.org

www.cesam.org

COVID-19 Overview

Date : 6th April 2020

Place/COUNTRY : Dominican Republic

Name : SCHAD Expertise, Frederic Schad Inc.

Email : mail.expertise@schad.do

Phone : +1809 223 4341/+1809 696 1433



1. Main measures taken by government (max. 2 lines of explanation for each measure)

- CONFINEMENT : Recommended except for essential needs
- NON ESSENTIAL BUSINESS' CLOSURE :
- BORDERS' CLOSURE :
- OTHERS : Overnight curfew from 5pm to 6am
- NONE :

2. Port's situation (max. 10 lines)

Cargo operations proceeding at all sea and airports

3. Inland transports' situation (max. 10 lines)

Currently operating outside of curfew hours

4. Airports' situation (max 5 lines)

Cargo operations and few incoming repatriation flights.

5. Any import cargo treatment/decontamination (max 5 lines)

- NO
- YES

6. Possibilities of surveys

- NO
- YES

7. Specific information (max 5 lines)

Full lockdown anticipated to cover inland passenger and cargo transport



Comité des Assureurs Maritimes et Transports

8, rue d'Artois – 75008 PARIS (France)

Tél. : (33.1) 58 56 96 00

Email : info@cesam.org

www.cesam.org

COVID-19 Overview

Date : March 31 2020

Place/COUNTRY : El Salvador,

Name : Gibson & Co.,

Email : claims@gibson.com.sv

Phone : (503) 22365555



1. Main measures taken by government (max. 2 lines of explanation for each measure)

- CONFINEMENT :
- NON ESSENTIAL BUSINESS' CLOSURE :
- BORDERS' CLOSURE :
- OTHERS :
- NONE :

2. Port's situation (max. 10 lines)

Port on restricted operations

3. Inland transports' situation (max. 10 lines)

Inland transport functioning with restrictions

4. Airports' situation (max 5 lines)

Airports are closed except for Air Cargo and Humanitarian missions.

5. Any import cargo treatment/decontamination (max 5 lines)

- NO
- YES

6. Possibilities of surveys

- NO
- YES

7. Specific information (max 5 lines)

The entire country is on lockdown for 30 days which commenced March 21st and could be extended.



Comité des Assureurs Maritimes et Transports

8, rue d'Artois – 75008 PARIS (France)

Tél. : (33.1) 58 56 96 00

Email : info@cesam.org

www.cesam.org

COVID-19 Overview

Date : 20 April 2020

Place/COUNTRY : Honduras

Name : Moller de Honduras

Email : mollerhonduras@gmail.com

Phone : (504) 2270 7183



1. Main measures taken by government (max. 2 lines of explanation for each measure)

- CONFINEMENT** : People can only circulate based on last digit in identification card. 2 digits per day (Mon-Friday)
- NON ESSENTIAL BUSINESS' CLOSURE** : All business closed except transport, drugstores, markets, hardware stores.
- BORDERS' CLOSURE** :
- OTHERS** :
- NONE** :

2. Port's situation (max. 10 lines)

Ports are operating normally, vessels unloading cargo.

3. Inland transports' situation (max. 10 lines)

Transport of goods i.e. containers, operating normally.

4. Airports' situation (max 5 lines)

Airports closed. Only flights authorized are those taking foreign nationals back to their country, mostly USA carrier/flight.

5. Any import cargo treatment/decontamination (max 5 lines)

- NO**
- YES** Cargo depending on their nature or origin are fumigated.

6. Possibilities of surveys

- NO**
- YES**

7. Specific information (max 5 lines)

Surveys limited to date surveyor can circulate, according to his last digit in identification document.



Comité des Assureurs Maritimes et Transports

8, rue d'Artois – 75008 PARIS (France)

Tél. : (33.1) 58 56 96 00

Email : info@cesam.org

www.cesam.org

COVID-19 Overview

Date : 27/Mar/2020

Place/COUNTRY : MEXICO

Name : Marine Surveyors & Adjusters, S.C. / Enrique del Paso

Email : enrique@marinesurveyors.com.mx

Phone : +52 55 5431 1074



1. Main measures taken by government (max. 2 lines of explanation for each measure)

- CONFINEMENT** : Private business only, Federal Government not reacting
- NON ESSENTIAL BUSINESS' CLOSURE** : most of Local Governments are taking closing all, except elementary business like medicine, hospitals, firemen, police, and food chain supply.
- BORDERS' CLOSURE** :USA-Mexico Border closure, with few exemptions
- OTHERS** :
- NONE** :

2. Port's situation (max. 10 lines)

Very few import, exports partially reduced

3. Inland transports' situation (max. 10 lines)

Theft and truckers hi-jacking have increased, even with import/export cargoes reduced.

4. Airports' situation (max 5 lines)

Overloaded with European flights

5. Any import cargo treatment/decontamination (max 5 lines)

- NO**
- YES**

6. Possibilities of surveys

- NO**
- YES** Surveys subject to personal protective gear, continuously wash their hands and stay away from possible contaminated sites and if covid-19 is feared, to stay away from and not to perform Survey.

7. Specific information (max 5 lines)

Our office will be completely closed next week, in consideration to our employees' health. We all be working from home.

COVID-19 Overview

Date : April 21,2020

Place/COUNTRY : Nicaragua

Name : Georgina Griffith

Email : ggriffith@jigriffith.com

Phone : 505-22786394



1. Main measures taken by government (max. 2 lines of explanation for each measure)

- CONFINEMENT** : Has not been mandated, citizens are staying home by their own action and need for safety.
- NON ESSENTIAL BUSINESS' CLOSURE** :NO, businesses that can have staff work from home doing so.
- BORDERS' CLOSURE** :Closed on April 17th, 2020
- OTHERS** :
- NONE** :

2. Port's situation (max. 10 lines)

Port is working normally, no crew changes is allowed, no commercial flights available.

Currently small changes are faced during berthing maneuvers due to prevention of Corona virus, which consisted in the following procedure:

1. Master must provide Maritime Health Declaration prior arrival.
2. In case some on board faced symptoms during transit, Master must notify to port agent, who will inform Health Department officer.
3. Once vessel is at anchorage area, Health Department officer will board the vessel at first.
4. Once health Department officer has checked all crew member and found all in order, he will instruct Quarantine officer to board the vessel
5. Health Department officer and Quarantine personnel will carry our normal inspection to the vessel and complete free pratique outside.
6. Once free pratique outside is completed, pilot will be allowed to board the vessel for transferring her to the berth.

3. Inland transports' situation (max. 10 lines)

Working normally

4. Airports' situation (max 5 lines)

Opened for cargo flights, but no commercial flights available.

5. Any import cargo treatment/decontamination (max 5 lines)

- NO**
- YES**

6. Possibilities of surveys

- NO**
- YES**

7. Specific information (max 5 lines)



Comité des Assureurs Maritimes et Transports

8, rue d'Artois – 75008 PARIS (France)

Tél. : (33.1) 58 56 96 00

Email : info@cesam.org

www.cesam.org

COVID-19 Overview

Date : 28/03/2020

Place/COUNTRY : Panama

Name : Javier Bru

Email : jbru@ime.com.pa

Phone : +507 66768505



1. Main measures taken by government (max. 2 lines of explanation for each measure)

- CONFINEMENT** : Citizens are confined to their homes only allowed to leave their homes in case of groceries and hospitals. However, the maritime, logistic and transport sector are exempt.
- NON ESSENTIAL BUSINESS' CLOSURE**: All non essential businesses are closed.
- BORDERS' CLOSURE** :
- OTHERS** :
- NONE** :

2. Port's situation (max. 10 lines)

Ports are running with a few limitations

3. Inland transports' situation (max. 10 lines)

Inland transport for cargo is still allowed; however with some delays due to sanitary road blocks.

4. Airports' situation (max 5 lines)

All international flights are stopped

5. Any import cargo treatment/decontamination (max 5 lines)

- NO**
- YES**

6. Possibilities of surveys

- NO**
- YES**

7. Specific information (max 5 lines)

The situation is just starting with scientists predicting that the peak of infection numbers will be reach at some point in June.



Comité des Assureurs Maritimes et Transports

8, rue d'Artois – 75008 PARIS (France)

Tél. : (33.1) 58 56 96 00

Email : info@cesam.org

www.cesam.org

COVID-19 Overview

Date : 27-03-2020

Place/COUNTRY : Paraguay

Name : Niko Bensien

Email : nbensien@ime.com.pa

Phone : +595991800352



1. Main measures taken by government (max. 2 lines of explanation for each measure)

- CONFINEMENT : Total confinement in place.
- NON ESSENTIAL BUSINESS' CLOSURE : Logistic chain is exhonored: ports, shipping and trucks can operate
- BORDERS' CLOSURE :
- OTHERS :
- NONE :

2. Port's situation (max. 10 lines)

Ports and Port logistic is exempted from the general confinement as per Decret No. 3478 dated 20-03-2020. Ports are functional and operated with minor restrictions under special sanitary guidelines given and controlled by local sanitary services and police.

3. Inland transports' situation (max. 10 lines)

Inland transport is exempted from the general confinement as per Decret No. 3478 dated 20-03-2020. Still trucks are operating with minor restrictions under special sanitary guidelines given and controlled by local sanitary services and police.

4. Airports' situation (max 5 lines)

The Airport is maintained open, but limited as all commercial passenger flights are cancelled. Chartered Cargo carriers are slowly coming in in order to take over flow of goods via Air transport. Until now the situation is very difficult, as basically no cargo space is available.

5. Any import cargo treatment/decontamination (max 5 lines)

- NO
- YES

6. Possibilities of surveys

- NO
- YES

7. Specific information (max 5 lines)

Total confinement is said to be in force until 12 of April 2020. It is to expect, that it will be prolonged on time, as situation in neighbouring countries is getting vastly worse these days.

COVID-19 Overview

Date : 2020-04-07

Place/COUNTRY : Peru

Name : Richard Fistrovic

Email : rf@intersea.com.pe

Phone : +51 999-449-444



1. Main measures taken by government (max. 2 lines of explanation for each measure)

- CONFINEMENT** : Mandatory confinement for all except for specific reasons (medical, banks, groceries).
- NON ESSENTIAL BUSINESS' CLOSURE** :
- BORDERS' CLOSURE** :
- OTHERS** : No transit at all allowed after curfew.
- NONE** :

2. Port's situation (max. 10 lines)

Operating, with some reduced productivity due to the safety measures. Newly arrived ship's are not boarded by the agent until after the sanitary inspection gives the OK to board.

3. Inland transports' situation (max. 10 lines)

Restricted.

4. Airports' situation (max 5 lines)

No air travel.

5. Any import cargo treatment/decontamination (max 5 lines)

- NO**
- YES**

6. Possibilities of surveys

- NO**
- YES**

7. Specific information (max 5 lines)

Surveyor can travel to the port with special permits from the police, Interior Ministry and National Ports Authority.



Comité des Assureurs Maritimes et Transports

8, rue d'Artois – 75008 PARIS (France)

Tél. : (33.1) 58 56 96 00

Email : info@cesam.org

www.cesam.org

COVID-19 Overview

Date : 7th MAY 2020

Place/COUNTRY : MONTEVIDEO, URUGUAY

Name : THOMAS J. SCHANDY LTDA. – KIRSTEN SCHANDY

Email : kirsten.schandy@schandy.com.uy

Phone : 0598.98217131



1. Main measures taken by government (max. 2 lines of explanation for each measure)

- CONFINEMENT** : Voluntary confinement is being carried out by all citizens, working from their homes or going to work complying with the Government's protocol, use of mask, distance and hygiene.
- NON ESSENTIAL BUSINESS' CLOSURE** : all non-essential businesses remain closed.
- BORDERS' CLOSURE** : Yes, although a sanitary corridor has been opened in order to receive airplanes to pick up foreigners infected with COVID-19. Uruguay has assisted citizens all over the world who were infected with covid-19 and onboard cruise vessels. They were authorized to disembark, go to local hospital and repatriated to their own countries. Cargo is allowed to enter the country through the borders.
- OTHERS** : Rural school classes were resumed and are sanitary monitored with good results. Classes in the capital are still being carried online. Many companies have sent their employees to unemployment insurance which has been extended by the Government up to the 31 May. Public offices have reopened this 4th May. Compulsory use of face masks. Alimentary plan to vulnerable population and subsidies to small enterprises.

2. Port's situation (max. 10 lines)

Port situation is still the same, working normally. Cargo has been entering the country as well as exporting. Cargo surveys are being carried out normally.

3. Inland transports' situation (max. 10 lines)

No change.

4. Airports' situation (max 5 lines)

Borders partially closed. Passenger flights are only has been allowed the ones bringing back Uruguayan from the rest of the world and taking back home world citizens disembarked from cruise vessels infected with Covid19. Cargo shipments are arriving normally.

5. Any import cargo treatment/decontamination (max 5 lines)

- NO
- YES

6. Possibilities of surveys

- NO
- YES

7. Specific information (max 5 lines)

The Government is being assisted by a 36-persons team formed by scientists, mathematicians and experts in order to study, monitor and state the steps to be followed, concerning the coronavirus pandemia in Uruguay.

COVID-19 Overview

Date : 6th April 2020

Place/COUNTRY : Trinidad & Tobago, W.I.

Name : Mikhail Ali

Email : mikhail.ali@hsl.co.tt huggins@hsl.co.tt

Phone : +18686229958 +18687497667



1. Main measures taken by government (max. 2 lines of explanation for each measure)

CONFINEMENT :

NON ESSENTIAL BUSINESS' CLOSURE : Businesses deemed critical to the continued running of the country are the only businesses deemed essential. Cargo operations and supporting services are essential.

BORDERS' CLOSURE : No passenger vessel/ flights are allowed in/out of Trinidad or Tobago.

OTHERS :

NONE :

2. Port's situation (max. 10 lines)

Air and Seaports have been closed to passenger entry (local and foreign). Cargo flights and vessels still maintain a free entry into both Trinidad and Tobago. Logistical companies who arrange cargo clearing have been deemed essential.

The Port-of-Spain port has waived rental charges until 15th April 2020.

Port operations have not changed (same loading / discharging operations are in place). However, medical supplies / food supplies are given preferred clearance.

3. Inland transports' situation (max. 10 lines)

No change to inland transportation as this is deemed an "Essential Service"

4. Airports' situation (max 5 lines)

Only cargo entry is allowed.

No passenger entry into either Trinidad or Tobago.

The inter-isle flights (between the islands of Trinidad & Tobago) are still operational.

5. Any import cargo treatment/decontamination (max 5 lines)

NO

YES

6. Possibilities of surveys

NO

YES

7. Specific information (max 5 lines)

Surveys are still being conducted by our office.

Surveyors have been supplied with the necessary safety equipment and information to conduct surveys.

Vessel surveys are now limited to emergency attendances only.

COVID-19 Overview

Date : 13-04-2020

Place/COUNTRY : Venezuela

Name : Cornelius Moller

Email : cornelius.moller@mollergroup.net

Phone : +584143286293



1. Main measures taken by government (max. 2 lines of explanation for each measure)

- CONFINEMENT : Extended until 05-13-2020
- NON ESSENTIAL BUSINESS' CLOSURE :Extended until 05-13-2020
- BORDERS' CLOSURE :Venezuelans are only allowed to return to the country.
- OTHERS :
- NONE :

2. Port's situation (max. 10 lines)

The Sea Ports are operating with limited personnel and considerable delays in the different operations.

3. Inland transports' situation (max. 10 lines)

National Transportation, which mainly depends on Trucks, is seriously affected by fuel shortages caused by International Political Sanctions and not by the Pandemic.

4. Airports' situation (max 5 lines)

Airports are operating limitedly. Commercial Passenger Flights are not allowed, only Cargo and Mail.

5. Any import cargo treatment/decontamination (max 5 lines)

- NO
- YES

6. Possibilities of surveys

- NO
- YES

7. Specific information (max 5 lines)

Some surveys can be carried out as long as they are close to the main cities, ports or airports.

NORTHERN AMERICA





Comité des Assureurs Maritimes et Transports

8, rue d'Artois – 75008 PARIS (France)

Tél. : (33.1) 58 56 96 00

Email : info@cesam.org

www.cesam.org

COVID-19 Overview

Date : April 20, 2020

Place/COUNTRY : United States

Name : Darin Miller

Email : darin.miller@sedgwick.com

Phone : +1 713 557 7059



1. Main measures taken by government (max. 2 lines of explanation for each measure)

- CONFINEMENT : Stay at home ordered for most of the country
- NON ESSENTIAL BUSINESS' CLOSURE :
- BORDERS' CLOSURE :
- OTHERS :
- NONE :

2. Port's situation (max. 10 lines)

All ports are operational. In some instances worker's temperature is checked before allowed entry into the port.

3. Inland transports' situation (max. 10 lines)

Still ongoing, but some precaution is taken with drivers / workers wearing masks, gloves, etc.

4. Airports' situation (max 5 lines)

Still open, though many flights are canceled due to low demand.

5. Any import cargo treatment/decontamination (max 5 lines)

- NO
- YES

6. Possibilities of surveys

- NO
- YES

7. Specific information (max 5 lines)

USA has been on "lock down" for almost one month, but is now working on reopening most businesses. In some states, some non-essential businesses will look to open within the next week.

MIDDLE EAST





Comité des Assureurs Maritimes et Transports

8, rue d'Artois – 75008 PARIS (France)

Tél. : (33.1) 58 56 96 00

Email : info@cesam.org

www.cesam.org

COVID-19 Overview

Date : 07/05/2020

Place/COUNTRY : Basrah / Iraq

Name : Med. Bureau / Eng. Nasfat F. Saabneh

Email : : iraq@medbureau.net + info@medbureau.net

Phone : 009627994332916



1. Main measures taken by government (max. 2 lines of explanation for each measure)

- CONFINEMENT : yes, curfew part hours and the military on the street.
- NON ESSENTIAL BUSINESS' CLOSURE :all vital facilities are closed except for the health sector
- BORDERS' CLOSURE :all border are opened with the nearer countries for foods or medicine
- OTHERS :
- NONE :

2. Port's situation (max. 10 lines)

Umm Qasr port working at normal condition for all shipments (expoert & import)

3. Inland transports' situation (max. 10 lines)

All inland transportation going smoothly between cities

4. Airports' situation (max 5 lines)

All Iraqi airports closed due to corona virus except the iraqi citizin from over the world

5. Any import cargo treatment/decontamination (max 5 lines)

- NO
- YES

6. Possibilities of surveys

- NO
- YES

7. Specific information (max 5 lines)

All Iraqi cities are opened partly day time



Comité des Assureurs Maritimes et Transports

8, rue d'Artois – 75008 PARIS (France)

Tél. : (33.1) 58 56 96 00

Email : info@cesam.org

www.cesam.org

COVID-19 Overview

Date : 7/04/2020

Place/COUNTRY : Israel

Name : Galram Surveyors & Adjusters LtdY

Email : yoram.golan@galram.com

Phone : +972 54 7960044



1. Main measures taken by government (max. 2 lines of explanation for each measure)

- CONFINEMENT : Not more than 2 people in 1 space
- NON ESSENTIAL BUSINESS' CLOSURE :Reduced by 85%
- BORDERS' CLOSURE :Total
- OTHERS : Keep 2 m from nearest person. Few municipalities under seizure
- NONE :

2. Port's situation (max. 10 lines)

Port operates as usual. All Marinas are closed. Seamen are not allowed ashore

3. Inland transports' situation (max. 10 lines)

Commercial traffic as usual. Public transport limited

4. Airports' situation (max 5 lines)

Most airlines stopped service

5. Any import cargo treatment/decontamination (max 5 lines)

- NO
- YES

6. Possibilities of surveys

- NO
- YES

7. Specific information (max 5 lines)

Logistics and marine insurance are considered vital occupation

COVID-19 Overview

Date : 07/05/2020

Place/COUNTRY : Aqaba / Jordan

Name : : Med.Bureau / Eng. Nasfat F. Saabneh

Email : : info@medbureau.net

Phone : 00962799432916



1. Main measures taken by government (max. 2 lines of explanation for each measure)

- CONFINEMENT** : YES, curfew from 1800 hrs-0800 hrs. Military on the street during this period. The time from 0800 hrs – 1800 hrs allowed to moving by cars.
- NON ESSENTIAL BUSINESS' CLOSURE** :Schools, universities , Restaurants, etc are all closed. Supermarkets are open 7 days a week, but with reduced working hours. In addition to governmental and private departments are opened normally with few persons.
- BORDERS' CLOSURE** :YES, only for persons, for cargo still open.
- OTHERS** :
- NONE** :

2. Port's situation (max. 10 lines)

Aqaba port is opened 24 hours for all shipment (export&import)

3. Inland transports' situation (max. 10 lines)

Opened for all kinds of cargo

4. Airports' situation (max 5 lines)

Airports remain open for cargo transport or for the return expatriate jordanian students from many countries

5. Any import cargo treatment/decontamination (max 5 lines)

- NO
- YES

6. Possibilities of surveys

- NO
- YES

7. Specific information (max 5 lines)

As the government declaration trying to running the life smoothly while keeping each Friday closed for 24 hours.

PERSIAN GULF & GULF OF OMAN





Comité des Assureurs Maritimes et Transports

8, rue d'Artois – 75008 PARIS (France)

Tél. : (33.1) 58 56 96 00

Email : info@cesam.org

www.cesam.org

COVID-19 Overview

Date : 22.04.2020

Place/COUNTRY : Muscat - Oman

Name : Abhir Porobo

Email : abhir.porobo@iss-shipping.com

Phone : +968-99315968



1. Main measures taken by government (max. 2 lines of explanation for each measure)

- CONFINEMENT** : Government has requested citizens to stay indoor as much as possible
- NON ESSENTIAL BUSINESS' CLOSURE** : Only hospitals, pharmacies & supermarkets are open
- BORDERS' CLOSURE** : All borders are presently sealed for personnel however operational for cargo.
- OTHERS** : Government & Private employees from most of the companies are working from home
- NONE** :

2. Port's situation (max. 10 lines)

Ports are not accepting passenger vessels for berthing. Rest cargo vessel operation continues with restricted entry to vessels.

3. Inland transports' situation (max. 10 lines)

Normal operation

4. Airports' situation (max 5 lines)

Cargo flights are operating as normal. However all passenger flights stand cancelled until further notice.

5. Any import cargo treatment/decontamination (max 5 lines)

- NO
- YES

6. Possibilities of surveys

- NO
- YES

7. Specific information (max 5 lines)

From 01st April 2020 restricted movement of citizens and residents between the entries and exits of all the governorates in Oman.

As per latest circular Muscat Area will be on a complete lockdown from 22nd April 2020 until 08th May 2020.

For latest information about Oman we provide below link for latest updates in the Sultanate:

<https://www.iss-shipping.com/pages/coronavirus-port-country-implications>



Comité des Assureurs Maritimes et Transports

8, rue d'Artois – 75008 PARIS (France)

Tél. : (33.1) 58 56 96 00

Email : info@cesam.org

www.cesam.org

COVID-19 Overview

Date : 22nd April 2020

Place/COUNTRY : Saudi Arabia

Name : Engr. Abdulrahman S. A. Fadul

Email : a.fadul@aet-lloydsagency.com

Phone : +966-597813983



1. Main measures taken by government (max. 2 lines of explanation for each measure)

- CONFINEMENT** : Curfew applied for 24 hours (daily) at Saudi Arabia until further notice , as per government instruction.
- NON ESSENTIAL BUSINESS' CLOSURE** :confirmed
- BORDERS' CLOSURE** :confirmed
- OTHERS** : curfew applied for 24 hours at Saudi Arabia, as per government instruction
- NONE** :

2. Port's situation (max. 10 lines)

Curfew applied for 24 hours (daily) at Saudi Arabia until further notice , as per government instruction. No one is allowed to enter the ports.

3. Inland transports' situation (max. 10 lines)

Curfew applied for 24 hours (daily) at Saudi Arabia until further notice, as per government instruction.

4. Airports' situation (max 5 lines)

Curfew applied for 24 hours (daily) at Saudi Arabia until further notice, as per government instruction. All passengers flights are suspended until further notice, except the commercial flights.

5. Any import cargo treatment/decontamination (max 5 lines)

- NO
- YES

6. Possibilities of surveys

- NO
- YES permission from government to travel during curfew hours

7. Specific information (max 5 lines)

Curfew applied for 24 hours (daily) at Saudi Arabia until further notice, as per government instruction. No one is allowed to leaving his home.



Comité des Assureurs Maritimes et Transports

8, rue d'Artois – 75008 PARIS (France)

Tél. : (33.1) 58 56 96 00

Email : info@cesam.org

www.cesam.org

COVID-19 Overview

Date : 14th April 2020

Place/COUNTRY : Dubai, UAE

Name : Peter Valles

Email : peter.valles@iss-shipping.com

Phone : +971506453894



1. Main measures taken by government (max. 2 lines of explanation for each measure)

- CONFINEMENT** : Yes, as of 2000 hrs on 26th March 2020 there has been a directive by the government for complete confinement of all residents and this has been extended until further notice from the Government.
- NON ESSENTIAL BUSINESS' CLOSURE** : Yes, all staff working from home. Both Government and private sectors have been instructed that only critical areas may continue to work.
- BORDERS' CLOSURE** : Yes, however some flights are being allowed to repatriate foreigners. Air cargo flights still allowed in.
- OTHERS** : Cargo shipping is being closely monitored and enforced health reporting of crew. It is not possible to board vessels however cargo can be inspected on the quayside or stacking area for breakbulk and project cargo. Containers are being inspected at warehouses post delivery at the moment.
- NONE** :

2. Port's situation (max. 10 lines)

Cargo vessels are being allowed in with full quarantine. No shore leave allowed and stevedores only working with full PPE. Surveyors and agents are not allowed to board and have to stay shoreside. Port of Khor Fakkan has refused surveyors to go offshore to board vessels for inspections.

3. Inland transports' situation (max. 10 lines)

No movement after 2000 hrs except for those exceptions with written permission from the local police. Permission is only given to shift workers for critical industries like medical care and emergency services. Certain sections of the city are cordoned off to isolate any known cases of the Corona virus.

4. Airports' situation (max 5 lines)

Airports, air cargo operational. Passengers also only for repatriation. No inbound and all borders are closed.

5. Any import cargo treatment/decontamination (max 5 lines)

- NO
- YES

6. Possibilities of surveys

- NO
- YES

7. Specific information (max 5 lines)

Surveys are possible even 24 hours supervision of cargo in ports provided permissions have been obtained and company letters provided. We are looking at legal advice on potential demurrage claims and will revert with feedback after obtaining the advice in our next update.

OCEANIA



COVID-19 Overview

Date : 21st April 2020

Place/COUNTRY : AUSTRALIA

Name : McLARENS

Email : John.Cupitt@McLarens.com

Phone : +61 (0) 412740428



1. Main measures taken by government (max. 2 lines of explanation for each measure)

- CONFINEMENT :
- NON ESSENTIAL BUSINESS' CLOSURE :
- BORDERS' CLOSURE :
- OTHERS :
- NONE :

2. Port's situation (max. 10 lines)

The Australian government has banned the export of some equipment that could help efforts to stop the spread of COVID-19, including: disposable face masks, disposable gloves, disposable gowns, goggles, glasses or eye visors, alcohol wipes, hand sanitizer.

All vessels entering Australia that have a suspected case of COVID-19 on board will not be allowed to unload goods or disembark travellers until cleared to do so by the human biosecurity officer.

Where vessels have a suspected case of COVID-19 on board, a human biosecurity officer will screen for COVID-19, determine the appropriate course of action and issue directions.

A ship must not enter a Queensland port area until 14 days have elapsed since the ship or any relevant person on board the ship left, or transited through a port in mainland China or South Korea.

3. Inland transports' situation (max. 10 lines)

State Borders are closed in Northern Territory, Queensland, South Australia and Western Australia. Only residents and those considered exempt will be allowed to enter via air, sea, rail or road from another State or Territory.

Transport or freight of goods is exempt from border controls on the condition that the person performing the services must practise social distancing wherever possible, and remain self-quarantined in their vehicle or accommodation

4. Airports' situation (max 5 lines)

As outlined above

5. Any import cargo treatment/decontamination (max 5 lines)

- NO
- YES

6. Possibilities of surveys

- NO
- YES

7. Specific information (max 5 lines)

CONTACT :
CESAM - International Depart.
Networks Unit

Frédéric DENÈFLE
fdenefle@cesam.org
Tel. : +33 1 58 56 96 16

Mathilde DOCQUIERT
mdocquiert@cesam.org
Tel. : +33 1 58 56 96 14